

DOCUMENT 00 90 10
ADDENDUM No. 1



PART 1 GENERAL

1.1 DOCUMENT INCLUDES

- A. Changes to the Bid Documents.
- D. Changes to the Plan Set.
- E. Clarifications and Response to Questions.

1.2 CONSTRUCTION CONTRACT

- A. The Construction Contract is known as:
SA009 – CIP – 12TH ST/CENTURY DR – PHASE 1
- B. Date of this Addendum: 2/10/2026

PART 2 CHANGES

2.1 CHANGES TO PRIOR ADDENDA

- A. None

2.2 CHANGES TO BIDDING REQUIREMENTS

- A. 00 41 10 Bid Schedule No. 1 –Bid Item 1 Quality Control Testing, added part G to detail measurement and payment for bid item.
- B. 00 41 10 Bid Schedule No. 1 –Bid Item 9 Removal of Asphalt Pavement, changed quantity from 5,344 SY to 4,500 SY.
- C. 00 41 10 Bid Schedule No. 1 –Updated Bid Item 10 “4” Asphalt (PG 58-28 1/2)” to “6” Asphalt (PG 58-28 1/2)” and changed quantity from 1,162 TON to 1,400 TON.
- D. 00 41 10 Bid Schedule No. 1 –Bid Item 11 Untreated Base Course (1" minus), changed quantity from 2,325 TON to 2,000 TON.
- E. 00 41 10 Bid Schedule No. 1 –Bid Item 12 Remove & Replace Ex Curb & Gutter, changed quantity from 379 LF TON to 440 LF.
- F. 00 41 10 Bid Schedule No. 1 –Bid Item 13 Raise and Collar Water Valves, changed quantity from 16 EACH to 13 EACH.
- G. 00 41 10 Bid Schedule No. 1 – Updated Bid Item 21 “Import Pipe Zone Backfill” to “Import Pipe Zone Backfill (Sewer)” and changed quantity from 2,913 TON to 3,500 TON.
- H. 00 41 10 Bid Schedule No. 1 –Bid Item 22 Import Trench Zone Backfill, changed quantity from 8,007 TON to 12,100 TON.
- I. 00 41 10 Bid Schedule No. 1 –Bid Item 27 Manhole Abandonment, changed quantity from 7 EACH to 5 EACH.

- J. 00 41 10 Bid Schedule No. 1 – Added Bid Item 35 Import Flowable Fill.
- K. 00 41 10 Bid Schedule No. 1 – Added Bid Item 36 Import Pipe Zone Backfill (Water).
- L. 00 41 10 Bid Schedule No. 1 – Added Bid Item 37 Raise and Collar Existing Manholes.
- M. 00 41 10 Bid Schedule No. 1 – Added Bid Item 38 Existing Manhole Removal.
- N. 00 41 10 Bid Schedule No. 1 – Added Bid Item 39 Existing Water Valve Removal.
- O. 00 41 10 Bid Schedule No. 1 – Added Bid Item 40 Remove and Replace Existing Sidewalk (4” THK).
- P. 00 41 10 Bid Schedule No. 1 – Added Bid Item 41 Remove and Replace Existing Concrete (6” THK).
- Q. 00 41 10 Bid Schedule No. 1 – Added Bid Item 42 Sewer Lateral CCTV Inspection.
- R. 00 41 10 Part 3.11 Bid Item 10 6” Asphalt (PG 58-28 ½”). Updated part B: Payment covers the cost of installing 6”-thick of hot-mixed, hot laid asphalt.
- S. 00 41 10 Part 3.22 Bid Item 21 Import Pipe Zone Backfill (Sewer). Updated part D: Payment covers the pipe zone backfill for the sewer pipe only.
- T. 00 41 10 Part 3.36 Bid Item 35 Import Flowable Fill. Added parts A, B and C to detail measurement and payment for bid item.
- U. 00 41 10 Part 3.37 Bid Item 36 Import Pipe Zone Backfill (Water). Added parts A, B, C and D to detail measurement and payment for bid item.
- V. 00 41 10 Part 3.38 Bid Item 37 Raise and Collar Storm Drain Manholes. Added parts A, B, C and D to detail measurement and payment for bid item.
- W. 00 41 10 Part 3.39 Bid Item 38 Existing Manhole Removal. Added parts A, B, C and D to detail measurement and payment for bid item.
- X. 00 41 10 Part 3.40 Bid Item 39 Existing Water Valve. Added parts A and B to detail measurement and payment for bid item.
- Y. 00 41 10 Part 3.41 Bid Item 40 Remove and Replace Existing Sidewalk (4” THK). Added parts A and B to detail measurement and payment for bid item.
- Z. 00 41 10 Part 3.42 Bid Item 41 Remove and Replace Existing Concrete (6” THK). Added parts A and B to detail measurement and payment for bid item.
- AA. 00 41 10 Part 3.43 Bid Item 42 Sewer Lateral CCTV Inspection. Added parts A, B, C and D to detail measurement and payment for bid item.

2.6 CHANGES TO DRAWINGS

- A. Sheets PP1 to PP7 and C1: Added three new construction notes with accompanying symbols at appropriate locations. Changed construction note 20 from 4” to 6”.
- B. Sheet PP1 to PP7: Adjusted width of the asphalt trench and dimension label.
- C. Sheet PP1 and PP3: Added note to applicable cleanouts to remove and restore concrete.

- D. Sheet PP2: Added label with rim and invert information for SSMH-4
- E. Sheet PP4: Added note for flow fill around the Mill Creek Irrigation boxes, including dimensions.
- F. Sheet PP6: Updated keynotes to raise and collar instead of abandon manholes on EX SSMH-10 and EX SSMH-11.
- G. Sheet C1: adjusted dimensions that were not showing proper distances in the profile view, also added the water valve symbols to the plan view.

2.7 CLARIFICATIONS AND RESPONSE TO QUESTIONS

- A. Groundwater is expected. See Part 1.3 of Section 01 14 00 Work Restrictions.
- B. Design specifies untreated base course for precast sewer manholes per Ogden City Detail SS-1 on Sheet D-2. UTBC under sewer manholes are accounted and paid for under Bid Items 19 and 20. If groundwater is discovered, UTBC may be substituted with sewer rock as part of a change order.
- C. Sewer laterals shall be connected to the sewer main using Inserta Tees or approved equal. Laterals shall be perpendicular to the main from the sewer main connection to the new cleanout where it is connected to the existing lateral.
- D. All new sewer mains shall be air tested per APWA standard specifications. Refer to Ogden City Engineering Standards 3-2 Sanitary Sewer Design Standards; C Sewer Pipe Main Trench Standards; and Section 33 08 00 Commissioning of Water Utilities (Part 3.6). Air testing is accounted and paid for under Bid Item 1 Quality Control Testing.
- E. **Question:** Is the 8" sewer line on 7th street flowing west to century? If so do you know what those flows are for bypass pumping?
Answer: The 8" sewer line on the east side of EX SSMH-07 flows west to Century Dr and discharges into EX SSMH-07. There are 21 homes connected to this line. Assuming each home has 3 people on average, and assuming 400 gallons per capita per day, the expected flow will be approximately 17.5 gpm.
The 8" sewer line on the west side of EX SSMG-07 flows east to Century Dr and also discharges into EX SSMH-07. There are 49 townhomes connected to this line. Assuming each home has 2 people on average, and assuming 400 gallons per capita per day, the expected flow will be approximately 27.2 gpm.
- F. **Question:** With Sunrise doing the construction staking, will they also assist in the adjustment in survey monuments and the remove/replace survey monuments?
Answer: No.
- G. **Question:** EX SSMH-10 and EX SSMH-11 appear to be part of the qty of (7) ea abandon manhole, unless I missed 2 somewhere else. These manholes don't appear that they can be abandoned until phase 2 is complete, would that be correct? If so would you still like a price for (7) abandon manholes, in this phase 1?
Answer: Yes, EX SSMH-10 and EX SSMH-11 are part of the 7 manholes to be abandoned (Bid Item 27). Since these two manholes cannot be abandoned until Phase 2, we are updating the quantity for Bid Item 27 Manhole Abandonment from 7 to 5. These two manholes will need to be raised and collared instead

during mill and overlay (accounted and paid for under Bid Item 37).

- H. **Question:** Depending on the answer above. The mill and overlay appears to capture all of phase 1 and the two manholes above in question. Would the mill and overlay qty be affected due to some portions of work not being completed south of 9th street until phase 2 was complete?

Answer: Yes, the extent of mill and overlay covers all of Phase 1. At this point, we would like to keep the quantity of mill and overlay unchanged as shown on the bid schedule.

END OF ADDENDUM

DOCUMENT 00 41 10

BID SCHEDULE

PART 1 GENERAL

1.1 DOCUMENT INCLUDES

- A. Bid schedules.
- B. Measurement and payment provisions.

1.2 CONSTRUCTION CONTRACT

- A. The Construction Contract is known as:
SA009 - CIP - 12TH ST/CENTURY DR - PHASE 1

1.3 REFERENCES

- A. APWA 01 29 00: Payment Procedures.
- B. Document 00 50 00: Agreement.

1.4 SCHEDULE TO BE ADDED TO THE AGREEMENT

- A. This document will be added to the Bid and Agreement by reference.

PART 2 BID SCHEDULES

2.1 BASE BID

- A. Bid Schedule No. 1 below describes work basic to the Contract.

The rest of this page left blank intentionally

BID SCHEDULE No. 1

Century Dr from 430 W to about 1036 S. Review the plans for further details of Phase 1 scope., SA009 - CIP - 12TH ST/CENTURY DR - PHASE 1

Item No.	BID ITEM	UNIT	QUANTITY	UNIT PRICE	TOTAL PRICE
1	Quality Control Testing	LS	1		
2	Mobilization	LS	1		
3	Subsurface Investigation	Hour	16		
4	Pre-construction Video	LS	1		
5	Post Construction Sewer Main CCTV Inspection	LF	2,921		
6	Traffic Control	LS	1		
7	SWPPP	LS	1		
8	Landscaping	LS	1		
9	Removal of Asphalt Pavement	SY	4,500		
10	6" Asphalt (PG 58-28 1/2")	TON	1,400		
11	Untreated Base Course (1" minus)	TON	2,000		
12	Remove & Replace Ex Curb & Gutter	LF	440		
13	Raise and Collar Water Valves	EACH	13		
14	Raise and Collar Survey Monument	EACH	2		
15	Remove and Replace Survey Monument	EACH	4		
16	21" PVC (SDR-35) Sewer Pipe	LF	2,921		
17	10" PVC (SDR-35) Sewer Pipe	LF	40		
18	Connect to EX CWSID SSMH	EACH	1		
19	60"-ID Precast SSMH	EACH	9		
20	60"-ID Precast Drop Manhole (SSMH-06, 10 and 11)	EACH	3		
21	Import Pipe Zone Backfill (Sewer)	TON	3,500		
22	Import Trench Zone Backfill	TON	12,100		
23	4" PVC Sewer Service Lateral Replacement	LF	390		
24	6" PVC Sewer Service Lateral Replacement	LF	480		
25	4" Service Lateral Cleanout and Service Reconnection	EACH	13		
26	6" Service Lateral Cleanout and Service Reconnection	EACH	16		

27	Manhole Abandonment	EACH	5		
28	Cut, Cap, and Abandon Existing Pipe	EACH	2		
29	Existing Water Meter Vault Relocation	LS	1		
30	8" PVC C-900 (DR-18) Water Pipe	LF	20		
31	8" Gate Valve	EACH	3		
32	6" PVC C-900 (DR-18) Water Pipe	LF	65		
33	6" Gate Valve	EACH	3		
34	1" Mill and Overlay	SY	12,388		
35	Import Flowable Fill	TON	62		
36	Import Pipe Zone Backfill (Water)	TON	52		
37	Raise and Collar Existing Manholes	EACH	5		
38	Existing Manhole Removal	EACH	1		
39	Existing Water Valve Removal	EACH	2		
40	Remove and Replace Existing Sidewalk (4" THK)	SY	5		
41	Remove and Replace Existing Concrete (6" THK)	SY	16		
42	Sewer Lateral CCTV Inspection	LF	2,320		

Total = \$ _____

Schedule Total in Words _____

Signature _____

PART 3 MEASUREMENTS AND PAYMENT

3.1 GENERAL

- A. See measurement and payment procedures in APWA Section 01 29 00.
- B. ENGINEER will take all measurements and compute all quantities.
- C. CONTRACTOR will verify measurement and quantities.
- D. CONTRACTOR will provide all equipment, workers, and survey crews to assist ENGINEER in making measurements.
- E. Units of measurement are listed above in the bid schedule(s).

3.2 QUALITY CONTROL TESTING, Bid Item No. 1

- a. Measurement will be made by lump sum (LS).
- b. Payment: Covers cost of all Quality Control Testing as outlined in APWA 01 45 00. Payment will be for the length of permanently installed pipe and not sacrificial pipe or temporary pipe. If additional control testing is requested by ENGINEER and testing shows product meets specification, such testing will be paid for by Change Order. (Refer to Section 01 45 00, Quality Control).
- c. Backfill Quality Control Requirements:
 - i. The number of compliance tests required is one density test per lift in each 200 feet of trench in a random location. And one density test per lift within each 25 square feet of area under pavement.
 - ii. An uncompacted backfill lift is 8 inches thick
 - iii. Deficient number of required tests measured in percent will result in a pay reduction up to 25 percent of the classification of work (Bid Item) required compacted backfill material.
 - iv. Test results by an independent testing agency will be the only test results accepted.
- d. Asphalt Quality Control Requirements:
 - i. Contractor to contract with third party independent testing agency to preform non-destructive density testing by gage: one per day or per 1,000 square yards.
 - ii. (Refer to Section 32 12 16.13, Plant-Mix Bituminous Paving).
- e. Concrete Quality Control Requirements:
 - i. Contractor to contract with third party independent testing agency to collect samples and perform testing in compliance with APWA specifications.
 - ii. (Refer to Section 03 30 05, Concrete Testing).
- f. Payments will be made on percentage basis as follows and in accordance with retainage as described in the Contract Documents.

Percent of Original Contract Amount Earned	Percent of Amount Bid for Quality Control to be Paid
25	25
50	50
75	75

- g. Payment covers the air testing of permanently installed sewer mains per Ogden City Engineering Standards and APWA Specifications (Section 33 08 00 Commissioning of Water Utilities).

3.3 MOBILIZATION, Bid Item No. 2

- a. Measurement will be made by lump sum (LS).
- b. Payment: Covers cost of mobilization, demobilization, installation of temporary facilities and bringing all necessary construction equipment to the site. Payment will be made on a percentage basis as follows. (Refer to APWA Section 01 71 13, Mobilization and Demobilization).

Percent of Original Contract Amount Earned	Percent of Amount Bid for Mobilization to be Paid
5	40
15	20
40	30
50	10

- c. Payment covers the cost of furnishing and installing project signage in accordance with Section 01 58 00.

3.4 SUBSURFACE INVESTIGATION, Bid Item No. 3

- a. Measurement will be made by counting the actual number of hours of work completed by the machine and operator to investigate miscellaneous underground features as required by the ENGINEER (HRS). Areas to be excavated MUST BE AGREED UPON with Resident Project Inspector in order to be paid. No allowance of time will be made for transporting the backhoe or other equipment to and from the job site when the backhoe or other equipment is located on the site of this Contract.
- b. Payment includes backfill and surface restoration to match the pre-existing condition in accordance with Section 33 05 20, Backfilling Trenches.
- c. Payment covers furnishing and providing labor and equipment for investigation at critical locations to verify field conditions, due to encountering unmarked utilities, buried structures, existing miscellaneous pipelines, wire and cables, and sub surface features as required by the ENGINEER and as shown on the construction plans.
- d. Contractor shall provide record of hours spent per excavation location, excavation dimensions and purpose, along with monthly pay application. (Refer to Section 02 41 20 SP, Utility Investigation).

3.5 PRE CONSTRUCTION VIDEO, Bid Item No. 4

- a. Measurement will be made by lump sum (LS).
- b. Payment covers the cost of labor, materials and equipment used to preform color audio-video recording of the existing pre-construction project site conditions along the proposed 21” sanitary sewer.

3.6 POST CONSTRUCTION SEWER MAIN CCTV INSPECTION, Bid Item No. 5

- a. Measurement will be made by linear feet (LF).
- b. Payment covers all costs associated with televising the newly installed sewer system and documenting the location of laterals tied into the new sewer main.
- c. Payment covers all costs associated with televising the constructed sewer system in lieu of exfiltration testing.
- d. Records of video footage and notes shall be provided to Owner. (Refer to Section 33 31 01 SP, Existing Sewer Bypass Pumping; and Section 33 38 00 SP, Sewer CCTV Inspection).
- e. Post-construction televising in accordance with Ogden City Standard Chapter 3, Section 2.1 and as specified below. (Refer to Section 33 38 00 SP, Existing Sewer CCTV Inspection).
 - i. CCTV personnel are to be certified under National Association of Sewer Service Companies (NASSCO) Pipeline Assessment Certification Program (PACP).
 - ii. Ogden City Reserves the right to have any portion of the pipe televised again at the contractor's expense, based on inaccurate or unclear information.

3.7 TRAFFIC CONTROL, Bid Item No. 6

- a. Measurement will be made by lump sum (LS).
- b. Payment covers traffic control plan, traffic control technicians, flaggers, pavement markings, signs, barricades, and all traffic control devices (Refer to Section 01 55 26, traffic control). Emergency services notification submission shall be stamped by a Professional Engineer.

3.8 SWPPP, Bid Item No. 7

- a. Measurement will be made by lump sum (LS).
- b. Payment covers the CONTRACTOR in obtaining coverage and following all requirements of the State of Utah DWQ General Permit for Storm Water Discharges from Construction Activities or the "Construction General Permit" (CGP). Permit No. UTRC00000 found at: <https://documents.deq.utah.gov/water-quality/stormwater/construction/DWQ-2020-013890.pdf>. The CONTRACTOR will be listed as an Operator and Ogden City will be listed as the Owner. Payment covers the CONTRACTOR to meet all requirements of the CGP. Requirements of this permit include, but are not limited to:
 - i. Preparation and maintenance of a storm water pollution prevention plan (SWPPP). The SWPPP must be submitted to and approved by City prior to beginning construction.
 - ii. Submitting a Notice of Intent (NOI) prior to construction.
 - iii. Maintaining active permit coverage throughout all phases of construction. It is the responsibility of the CONTRACTOR to ensure that permit coverage does not expire. Once the site meets the conditions for terminating CGP coverage, the CONTRACTOR must pass a final inspection with the City

SWPPP inspector prior to submitting the Notice Of Termination (NOT) to DWQ.

- iv. Installing and maintaining all storm water Best Management Practices (BMPs) in accordance with the approved SWPPP that are not listed as separate bid items, which may include; silt fence, construction fencing, inlet protection, inlet clean-out (if necessary).
 - v. Performing necessary Contractor SWPPP inspections in accordance with the SWPPP.
 - vi. Maintaining all required documentation (inspection reports, corrective action reports, SWPPPs, etc.). Ogden City may request documents associated with the project for up to three years from the date the site is finalized.
- c. The CGP outlines the required steps for preparing and maintaining the SWPPP, provides guidelines, examples, templates, BMP specifications, etc.
 - d. Payment shall cover dust control/watering of the site, daily maintenance of the construction zone, daily sweeping at a minimum, maintaining BMP devices, and maintaining general cleanliness of the site and staging areas during the construction process to the satisfaction of the City. Trenches shall be maintained at all times to avoid ruts larger than a 2-inch depth.
 - e. Payment shall cover temporary water meter rental fees billed to the Contractor from the City. Contractor will NOT be billed for water usage for the project but must utilize a meter to obtain City water for the project.

3.9 LANDSCAPING, Bid Item No. 8

- a. Measurement will be made by lump sum (LS).
- b. Payment covers the cost of labor, materials, tools, and equipment necessary to restore disturbed landscaping, irrigation lines, sod and other landscape features to existing conditions. (Refer to Section 32 94 00 SP, Landscaping).

3.10 REMOVAL OF ASPHALT PAVEMENT, Bid Item No. 9

- a. Measurement will be made by square yard (SY).
- b. Payment covers necessary work to saw cut, remove and dispose of all pavement along the sanitary sewer line trench and all work associated with sewer laterals. (Refer to Section 02 41 14, Pavement Removal).

3.11 6" ASPHALT (PG 58-28 ½"), Bid Item No. 10

- a. Measurement will be made by tons (TON).
- b. Payment covers the cost of furnishing all necessary materials, asphalt, tack coat equipment, labor, hauling, placement, and compaction to produce and acceptably deep excavation patch per Ogden City Standard RD-3, along Century Dr. The typical width of the roadway is about 36 feet. Payment covers the cost of installing 6"-thick of hot-mixed, hot laid asphalt concrete pavement (PG 58-28 ½"). (Refer to Section 33 05 25, Pavement Restoration).
- c. No more than 15% RAP allowed in asphalt mix.
- d. Payment also covers the cost of labor, materials, tools, and equipment required to return street striping, markings, and symbols to existing conditions on patched

asphalt per Ogden City Standards and per MUTCD State Guidelines. (Refer to APWA Section 32 17 23, Pavement Markings).

3.12 UNTREATED BASE COURSE (1" MINUS), Bid Item No. 11

- a. Measurement will be made by tons (TON).
- b. Payment covers the cost of furnishing all necessary materials, aggregate base course, labor, hauling, placement, and compaction to produce an acceptably deep excavation patch per Ogden City Standard RD-3 along the sewer and all sewer lateral trenches. Payment covers the cost of installing the full thickness of road base (Grade – 1"). (Refer to Section 32 11 23, Aggregate Base Course).
- c. Payment does not cover UTBC for under curb & gutters. That will be covered under Bid Item 13.
- d. Acceptably deep is defined as the thickness of the base course required per the construction drawing,
- e. No payment will be made for aggregate base course purchased and installed as a temporary measure or in excess of the specified thickness(es).
- f. Recycled concrete material is not acceptable to be used in the aggregate base course.

3.13 REMOVE AND REPLACE EX CURB AND GUTTER, Bid Item No. 12

- a. Measurement will be made by linear foot (LF).
- b. Payment covers the cost of furnishing all necessary materials including untreated base course and equipment, labor, hauling, disposal, placement, compaction, and testing to remove and replace curb and gutter in accordance with Ogden City Standard Drawing RD-4 or to match existing adjacent curb & gutter configuration. (Refer to Section 32 16 13, Driveway, Sidewalk, Curb, Gutter).
- c. The quantity listed is an assumed quantity to establish a unit price for removal and replace curb and gutter in the event it is needed. The location shown on the construction plans is an approximate location and the exact location and the length will be determined in the field.

3.14 RAISE & COLLAR WATER VALVES, Bid Item No. 13

- a. Measurement will be made by per each installed valve (EA)/adjusted to finish grade with collar installed. Valves are expected to be lowered for paving, then raised to grade with collar after paving.
- b. Payment covers all tools, labor, materials, and equipment to lower and raise existing structures to be flush (slightly lower by 1/4") with new grade. Payment covers all costs associated with raising/lowering the existing structure; removal and disposal of existing materials, concrete collars, concrete seal, labor, and all other appurtenant work not otherwise stipulated to be paid for separately.
- c. Valve cans shall be clear of any concrete debris or silting inside and must be centered, and cleaned around the nut of the valve to be accepted.
- d. Concrete for surface collars shall be obtained from batched concrete (i.e. Jack B. Parsons, Geneva, etc.) with fiber reinforcement in the batch. All concrete is to be sealed with a curing compound after concrete sets.
- e. All valve collars shall be stamped for valve identification with size and arrow.

Hydrant valves shall be stamped with an “H”.

- f. Refer to Section 33 12 16, Water Meter

3.15 RAISE AND COLLAR SURVEY MONUMENT, Bid Item No. 14

- a. Measurement will be made by per installed valve (EA)/adjusted to finish grade with collar installed. Monuments are expected to be lowered for paving, then raised to grade with collar after paving.
- b. Payment covers all tools, labor, materials, and equipment to lower and raise existing structures to be flush (slightly lower by ¼”) with new grade. Payment covers all costs associated with raising/lowering the existing structure; removal and disposal of existing materials, concrete collars, concrete seal, labor, and all other appurtenant work not otherwise stipulated to be paid for separately.
- c. Concrete for surface collars shall be obtained from batched concrete (i.e. Jack B. Parsons, Geneva, etc.). Concrete must be sealed and batched with fibers.
- d. Refer to Section 31 05 10, Boundary Markers and Survey Monuments

3.16 REMOVE AND REPLACE SURVEY MONUMENT, Bid Item No. 15

- a. Measurement will be made by per installed valve (EA)/adjusted to finish grade with collar installed. Monuments are expected to be removed for trenching, then replaced to grade with collar after paving.
- b. Payment covers all tools, labor, materials, and equipment to remove and replace existing structures to be flush (slightly lower by ¼”) with new grade. Payment covers all costs associated with removing/replacing the existing structure; removal and disposal of existing materials, concrete collars, concrete seal, labor, and all other appurtenant work not otherwise stipulated to be paid for separately.
- c. Concrete for surface collars shall be obtained from batched concrete (i.e. Jack B. Parsons, Geneva, etc.). Concrete must be sealed and batched with fibers.
- d. Refer to Section 31 05 10, Boundary Markers and Survey Monuments

3.17 21” PVC SEWER PIPE, Bid Item No. 16

- a. Measurement will be made by linear foot (LF).
- b. Payment covers the cost of the size and type of pipe indicated (21” PVC SDR-35, color green) with installation per Ogden City Standard Drawing SS-3. Payment covers the cost of incidental work such as, fittings, couplings, joint lubricants, nuts, bolts and washers; removal and disposal of interfering structures and obstruction; grout; jackhammer work; trench shoring or trench boxes as applicable; underground plastic lines markers; cleaning of invert covers; installation of geotextile separation wrap per Ogden City Standard Drawing SS-4; removable and disposal of waste materials, excavation spoils; restoration of all utilities damaged as a result of construction operations; site dewatering; trunk line cleaning and commissioning; adjustments to grade for manhole inverts and similar work to complete the installation of the sanitary sewer trunk line. (Refer to Section 33 31 00, Sanitary Sewerage System, and Section 33 05 07 Polyvinyl Chloride Pipe).

3.18 10” PVC SEWER PIPE, Bid Item No. 17

- a. Measurement will be made by linear foot (LF).
- b. Payment covers the cost of the size and type of pipe indicated (10” PVC SDR-35, color green) with installation per Ogden City Standard Drawing SS-3. Payment covers the cost of incidental work such as, fittings, couplings, joint lubricants, nuts, bolts and washers; removal and disposal of interfering structures and obstruction; grout; jackhammer work; trench shoring or trench boxes as applicable; underground plastic lines markers; cleaning of invert covers; installation of geotextile separation wrap per Ogden City Standard Drawing SS-4; removable and disposal of waste materials, excavation spoils; restoration of all utilities damaged as a result of construction operations; site dewatering; trunk line cleaning and commissioning; adjustments to grade for manhole inverts and similar work to complete the installation of the sanitary sewer trunk line. (Refer to Section 33 31 00, Sanitary Sewerage System and Section 33 05 07 Polyvinyl Chloride Pipe).

3.19 CONNECT TO EX CWSID SSMH, Bid Item, No. 18

- a. Measurement will be made by each (EA).
- b. Payment covers the cost of excavation, potholing, core drilling, grouting, backfill and compaction needed to connect the new sewer line into the existing Central Weber Sewer Improvement District manhole, and all material, including flexible manhole boot, manpower, and equipment required for a complete installation. (Refer to Section 33 31 00, Sanitary Sewer Systems).
- c. Payment also covers removing and disposing of the existing 18” sewer stub that will be replaced by the proposed 21” PVC sewer. (Refer to Section 33 31 00, Sanitary Sewer Systems).
- d. Payment also covers all costs associated with providing bypass pumping and overland piping from one manhole to another in order to facilitate the construction of new sewer and/or televising of the existing sewer.

3.20 INSTALL 60”-ID PRECAST SSMH, Bid Item No. 19

- a. Measurement will be made per each (EA).
- b. Payment covers the cost of excavation, bedding and backfill, potholing, and new manhole materials; installation of new manhole, sewer lid, ring & cover, collaring, relocation as needed for sewer connection(s) within manhole; providing material, labor, and incidentals for reconnecting all sewer mains and laterals to new manhole; and other miscellaneous devices, materials, or equipment required for a complete installation. (Refer to Section 33 31 00, Sanitary Sewerage System; Ogden City Standard Drawings SS-1 to SS-6).
- c. Payment also covers all costs associated with providing bypass pumping and overland piping from one manhole to another in order to facilitate the construction of new sewer and/or televising of the existing sewer.

3.21 INSTALL 60”-ID PRECAST DROP MANHOLE (SSMH-06, 10 AND 11), Bid Item No. 20

- a. Measurement will be made by each (EA).
- b. Payment covers the cost of excavation, bedding and backfill, potholing, and new

drop manhole materials; installation of new drop manhole, sewer lid, ring & cover, collaring, relocation as needed for sewer connection(s) within manhole; providing material, labor, and incidentals for reconnecting all sewer mains and laterals to new manhole; and other miscellaneous devices, materials, or equipment required for a complete installation. (Refer to Section 33 31 00, Sanitary Sewerage System; Ogden City Standard Drawings SS-1 to SS-6).

- c. Payment also covers all costs associated with providing bypass pumping and overland piping from one manhole to another in order to facilitate the construction of new sewer and/or televising of the existing sewer.

3.22 IMPORT PIPE ZONE BACKFILL (SEWER), Bid Item No. 21

- a. Measurement will be made per ton of backfilled material (TON).
- b. Payment covers the cost of furnishing all necessary materials and equipment, labor, hauling, placement, and compaction to produce an acceptable trench bedding (Sewer Rock ASTM Size No. 4). No allowance will be made for bedding and fill materials required to fill voids caused by trenching operations, which exceed the dimensions shown on the drawings. (Refer to Section 31 05 13, Common Fill and 33 05 20, Backfilling Trenches).
- c. Pipe zone includes all of the pipe zone area per Ogden City Standard Drawing SS-4.
- d. Payment covers the pipe zone backfill for the sewer pipe only.

3.23 IMPORT TRENCH ZONE BACKFILL, Bid Item No. 22

- a. Measurement will be made per ton of backfilled material (TON).
- b. Payment covers the cost of furnishing all necessary materials and equipment, labor, hauling, placement, and compaction to produce an acceptable trench fill (APWA - 2" Minus Granular Fill Borrow). No allowance will be made for bedding and fill materials required to fill voids caused by trenching operations, which exceed the dimensions shown on the drawings. Payment also includes cost to remove and dispose of existing soils displaced by the trench bedding and fill. (Refer to Section 31 05 13, Common Fill and 33 05 20, Backfilling Trenches).
- c. Trench backfill is defined as the material required to fill the trench from the top of the pipe zone to the bottom of the aggregate base course. See Ogden City Standard Drawing SS-3.
- d. Payment covers the trench zone backfill for both the sewer pipe and the water pipe.

3.24 4" SEWER SERVICE LATERAL REPLACEMENT, Bid Item No. 23

- a. Measurement will be made per lineal foot (LF), from sewer trunk line to sewer service cleanout.
- b. Payment covers the cost of excavation and/or pipe bursting, soil preparation, potholing, the sewer lateral, connection of the new sewer lateral to clean out, existing removal or abandonment and disposal of the existing sewer lateral(s); and other miscellaneous devices, materials, or equipment required for a complete sewer lateral installation per Ogden City Standard Drawings SS-2 and SS-8. Import pipe bedding and backfill are to be paid for separately. (Refer to Section 33 31 00,

Sanitary Sewerage Systems).

3.25 6" SEWER SERVICE LATERAL REPLACEMENT, Bid Item No. 24

- a. Measurement will be made per lineal foot (LF), from sewer trunk line to sewer service cleanout.
- b. Payment covers the cost of excavation and/or pipe bursting, soil preparation, potholing, the sewer lateral, connection of the new sewer lateral to clean out, existing removal or abandonment and disposal of the existing sewer lateral(s); and other miscellaneous devices, materials, or equipment required for a complete sewer lateral installation per Ogden City Standard Drawings SS-2 and SS-8. Import pipe bedding and backfill are to be paid for separately. (Refer to Section 33 31 00, Sanitary Sewerage Systems).

3.26 4" SERVICE LATERAL CLEANOUT AND SERVICE RECONNECTION, Bid Item No. 25

- a. Measurement will be made per each (EA).
- b. Payment shall cover the costs for all materials, excavation, backfill, compaction, cleaning, labor, tools, and incidentals necessary to furnish and install pipe, fittings, frame and cover, and incidentals per the construction plans and details and per Ogden City Standard Drawings SS-2 and SS-8. Sewer cleanouts shall be installed off the back of curb. Utility locating to locate the existing lateral shall be included as part of this pay item. Shoring will be required to mitigate the excavation impact to a maximum of 50 square feet disturbed. (Refer to Section 33 31 00, Sanitary Sewerage Systems).
- c. Payment covers the cost of excavating, soil preparation, connection of the sewer lateral to new sewer main via wye, tee, Fernco shear coupling, rubber gaskets, fittings, commissioning lateral; and other miscellaneous devices, materials, or equipment required for a complete service connection per Ogden City Standard Drawings SS-2 and SS-8. Includes installation of 10-foot or less of new PVC (SDR 35) sewer lateral along with trenching, bedding, etc. – any additional length required will be paid by the Lateral Replacement line item and other applicable line items. Payment includes the installation of a robust soil-tight plugs within the lateral to be abandoned. (Refer to Section 33 31 00, Sanitary Sewerage Systems; Ogden City Standard Drawings SS-2).

3.27 6" SERVICE LATERAL CLEANOUT AND SERVICE RECONNECTION, Bid Item No. 26

- a. Measurement will be made per each (EA).
- b. Payment shall cover the costs for all materials, excavation, backfill, compaction, cleaning, labor, tools, and incidentals necessary to furnish and install pipe, fittings, frame and cover, and incidentals per the construction plans and details and per Ogden City Standard Drawings SS-2 and SS-8. Sewer cleanouts shall be installed off the back of curb. Utility locating to locate the existing lateral shall be included as part of this pay item. Shoring will be required to mitigate the excavation impact to a maximum of 50 square feet disturbed. (Refer to Section 33 31 00, Sanitary Sewerage Systems).

- c. Payment covers the cost of excavating, soil preparation, connection of the sewer lateral to new sewer main via wye, tee, Fernco shear coupling, rubber gaskets, fittings, commissioning lateral; and other miscellaneous devices, materials, or equipment required for a complete service connection per Ogden City Standard Drawings SS-2 and SS-8. Includes installation of 10-foot or less of new PVC (SDR 35) sewer lateral along with trenching, bedding, etc. – any additional length required will be paid by the Lateral Replacement line item and other applicable line items. Payment includes the installation of a robust soil-tight plugs within the lateral to be abandoned. (Refer to Section 33 31 00, Sanitary Sewerage Systems; Ogden City Standard Drawings SS-2).

3.28 MANHOLE ABANDONMENT, Bid Item No. 27

- a. Measurement will be made by each (EA).
- b. Payment covers all cost of labor, equipment, and materials, to remove a manhole structure to 24 inches below grade, fracture the structure floor, install robust soil tight plugs within all pipes, and backfill with open graded gravel (i.e.3/4” clean). Location and description of manhole structure shall be precisely recorded and included in as-built drawings. (Refer to Section 02 41 13 Selective Site Demolition).

3.29 CAP, CUT AND ABANDON EXISTING PIPE, Bid Item No. 28

- a. Measurement will be made by each (EA).
- b. Payment covers all costs of labor, equipment, materials, to cut, cap, and abandon existing sewer lines that are to be abandoned, as indicated on the plans. Payment also included the cost of a robust soil tight plug. (Refer to Section 02 41 13 Selective Site Demolition).

3.30 EXISITING WATER METER VAULT RELOCATION, Bid Item No. 29

- a. Measurement will be made by lump sum (LS).
- b. Payment covers the cost of labor, equipment, materials for the new vault, including valves, appurtenances, bends, and all other miscellaneous parts needed inside the vault to relocate the existing water meter vault and install a new one as indicated in the plans. (Refer to Section 33 11 11, Relocate Water Meters and Fire Hydrants)
- c. Payment also covers the cost of demolishing the old water meter vault as indicated on the plans. (Refer to Section 02 41 13 Selective Site Demolition).
- d. Payment also covers the cost of connecting the new water line to the existing water system.
- e. The vault structure design will need to be stamped by a structural engineer.
- f. Payment covers the cost of labor, equipment, materials for the manhole covers, manhole rings or cone sections and adjusting the manhole covers so that they are flush with the new pavement.

3.31 8” PVC C-900 (DR-18) Water Pipe, Bid Item No. 30

- a. Measurement will be made by linear foot (LF) with no reduction in length because of valves and fittings.
- b. Payment covers the cost of the size and type of pipe indicated, with installation per

Ogden City Standard Drawing W-18 and surface restoration identified as separate pay items in the price schedule

- c. Payment covers the cost of excavation, incidental work such as joint restraint systems, fittings, couplings, joint lubricants, nuts, bolts and washers; removal and disposal of interfering structures and obstructions; jackhammer work; trench shoring or trench boxes as applicable, underground plastic line markers, tracer wire; removal and disposal of waste materials; restoration of all utilities damaged as a result of operations; site dewatering; pipe line cleaning; water main repair or replacement if damaged by CONTRACTOR; adjustments to grade of existing valve boxes or traffic lids or manholes; and similar work to complete the installation of the water line. (Refer to Section 33 05 07, Polyvinyl Chloride Pipe)
- d. Payment also covers the cost of demolishing the old water lines as indicated on the plans. (Refer to Section 02 41 13 Selective Site Demolition).
- e. Payment also covers the cost of connecting the new water line to the existing water system.

3.32 8" Gate Valve (Class 250), Bid Item No. 31

- a. Measurement will be made by actual count per each installed (EA).
- b. Payment covers the cost of excavation, foundation preparation, restraint devices, valve boxes, valve, concrete collar with seal, backfill and other miscellaneous devices, materials, or equipment required for a complete installation. See Ogden City Standard Drawing W-11 and W-12. Ogden City's Water Department Approved Materials List should be consulted for acceptable valve types. (Refer to Section 33 12 16, Water Valves)

3.33 6" PVC C-900 (DR-18) Water Pipe, Bid Item No. 32

- a. Measurement will be made by linear foot (LF) with no reduction in length because of valves and fittings.
- b. Payment covers the cost of the size and type of pipe indicated, with installation per Ogden City Standard Drawing W-18 and surface restoration identified as separate pay items in the price schedule
- c. Payment covers the cost of excavation, incidental work such as joint restraint systems, fittings, couplings, joint lubricants, nuts, bolts and washers; removal and disposal of interfering structures and obstructions; jackhammer work; trench shoring or trench boxes as applicable, underground plastic line markers, tracer wire; removal and disposal of waste materials; restoration of all utilities damaged as a result of operations; site dewatering; pipe line cleaning; water main repair or replacement if damaged by CONTRACTOR; adjustments to grade of existing valve boxes or traffic lids or manholes; and similar work to complete the installation of the water line. (Refer to Section 33 05 07, Polyvinyl Chloride Pipe)
- d. Payment also covers the cost of demolishing the old water lines as indicated on the plans. (Refer to Section 02 41 13 Selective Site Demolition).
- e. Payment also covers the cost of connecting the new water line to the existing water system.

3.34 6" Gate Valve (Class 250), Bid Item No. 33

- a. Measurement will be made by actual count per each installed (EA).
- b. Payment covers the cost of excavation, foundation preparation, restraint devices, valve boxes, valve, concrete collar with seal, backfill and other miscellaneous devices, materials, or equipment required for a complete installation. See Ogden City Standard Drawing W-11 and W-12. Ogden City's Water Department Approved Materials List should be consulted for acceptable valve types. (Refer to Section 33 12 16, Water Valves)

3.35 1" MILL AND OVERLAY, Bid Item No. 34

- a. Measurement will be made by square yard (SY).
- b. Payment covers the cost of milling, loading, hauling, and disposal of milled material, and furnishing placing and compacting new 1" asphalt mix for overlay on Century Drive. (Refer to Section 33 05 25, Pavement Restoration)

3.36 IMPORT FLOWABLE FILL, Bid Item No. 35

- a. Measurement will be made per ton of backfilled material (TON).
- b. Payment covers the cost of furnishing all necessary materials and equipment, labor, hauling, placement, and compaction to produce an acceptable trench fill (Flowable Fill meeting APWA specifications). No allowance will be made for bedding and fill materials required to fill voids caused by trenching operations, which exceed the dimensions shown on the drawings. Payment also includes cost to remove and dispose of existing soils displaced by the trench bedding and fill. (Refer to Section 31 05 13, Common Fill, 31 05 15 Cement Treated Fill and 33 05 20, Backfilling Trenches).
- c. Trench backfill is defined as the material required to fill the trench from the top of the pipe zone to the bottom of the aggregate base course. See Ogden City Standard Drawing SS-3.

3.37 IMPORT PIPE ZONE BACKFILL (WATER), Bid Item No. 36

- a. Measurement will be made per ton of backfilled material (TON).
- b. Payment covers the cost of furnishing all necessary materials and equipment, labor, hauling, placement, and compaction to produce an acceptable trench bedding (3/8" minus). No allowance will be made for bedding and fill materials required to fill voids caused by trenching operations, which exceed the dimensions shown on the drawings. (Refer to Section 31 05 13, Common Fill and 33 05 20, Backfilling Trenches).
- c. Pipe zone includes all of the pipe zone area per Ogden City Standard Drawing W-18.
- d. Payment covers the pipe zone backfill for the water pipe only.

3.38 RAISE & COLLAR EXISTING MANHOLES, Bid Item No. 37

- a. Measurement will be made by per each installed storm drain manhole (EA)/adjusted to finish grade with collar installed. Storm drain manholes are expected to be lowered for paving, then raised to grade with collar after paving.
- b. Payment covers all tools, labor, materials, and equipment to lower and raise existing

structures to be flush (slightly lower by ¼”) with new grade. Payment covers all costs associated with raising/lowering the existing structure; removal and disposal of existing materials, concrete collars, concrete seal, labor, and all other appurtenant work not otherwise stipulated to be paid for separately.

- c. Manhole frames and rings shall be clear of any concrete debris or silting inside and must be centered, and cleaned to be accepted.
- d. Concrete for surface collars shall be obtained from batched concrete (i.e. Jack B. Parsons, Geneva, etc.) with fiber reinforcement in the batch. All concrete is to be sealed with a curing compound after concrete sets.

3.39 EXISTING MANHOLE REMOVAL, Bid Item No. 38

- a. Measurement will be made by per each existing manhole (EA) removed.
- b. Existing Manhole Removal will be paid for at the contract unit price per each, which price shall be full compensation for furnishing all labor, materials, tools, equipment, and incidentals necessary to complete the work.
- c. Payment shall include the complete removal of the existing manhole structure including but not limited to manhole frame and cover, manhole barrel, cone and base, all appurtenances and connections.
- d. Payment shall also include but not limited to excavation necessary for manhole removal; protection and support of existing utilities; disposal of removed materials; backfilling with approved material and compaction to specified requirements. (Refer to Section 02 41 13, Selective Site Demolition)

3.40 EXISTING WATER VALVE REMOVAL, Bid Item No. 39

- a. Measurement will be made by actual count per each removed (EACH).
- b. Payment covers the cost of furnishing all necessary materials and equipment, labor, demolition, backfill, compaction, disposal, and testing to remove existing water valve boxes as called out in the plans. (Refer to Section 02 41 13, Selective Site Demolition)

3.41 REMOVE AND REPLACE EXISTING SIDEWALK (4” THK), Bid Item No. 40

- a. Measurement will be made by square yard (SY).
- b. Payment covers the cost of furnishing all necessary materials and equipment, labor, hauling, disposal, placement, compaction, and testing to replace sidewalk in accordance with Ogden City Standard Drawing RD-5 or to match existing adjacent sidewalk configuration. (Refer to Section 32 16 13, Driveway, Sidewalk, Curb, Gutter)

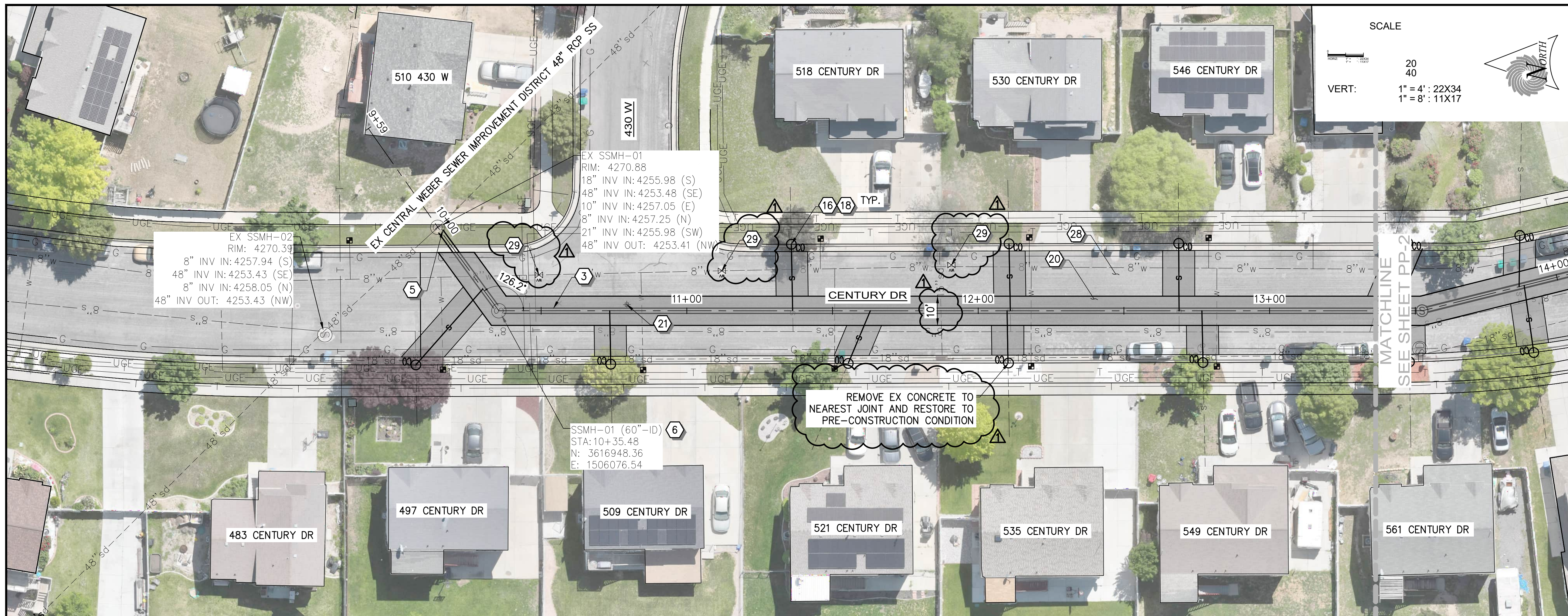
3.42 REMOVE AND REPLACE EXISTING CONCRETE (6” THK), Bid Item No. 41

- a. Measurement will be made by square yard (SY).
- b. Payment covers the cost of furnishing all necessary materials and equipment, labor, hauling, disposal, placement, compaction, and testing to replace concrete to match existing adjacent concrete configuration. This applies to concrete replacement for sewer lateral and cleanout work as called out on the plans.

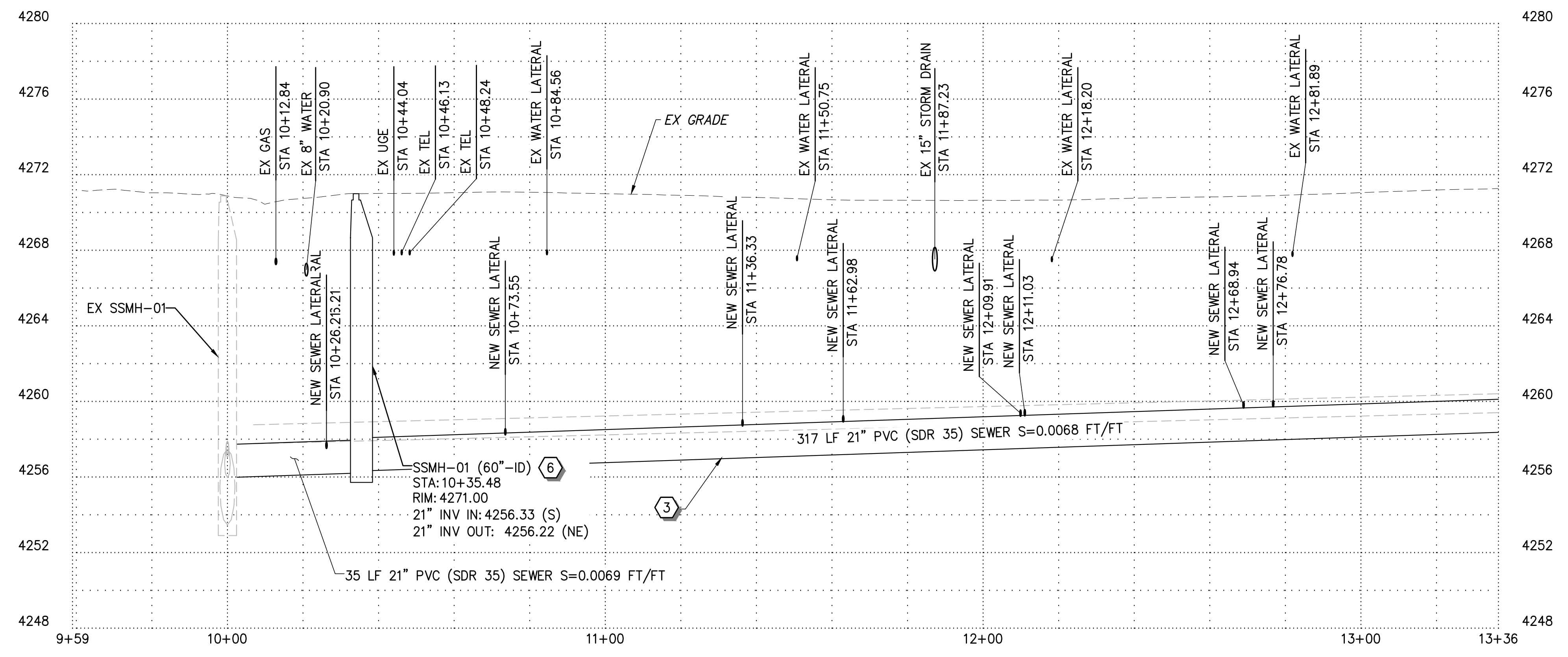
3.43 SEWER LATERAL CCTV INSPECTION, Bid Item No. 42

- a. Measurement will be made by linear feet (LF).
- b. Payment covers all costs associated with televising the existing sewer lateral (pre-construction) and newly installed sewer lateral (post-construction) up to 10 ft beyond the newly installed cleanout, and documenting the location of the existing lateral tied into the new sewer cleanout.
- c. Records of video footage and notes shall be provided to Owner. (Refer to Section 33 31 01 SP, Existing Sewer Bypass Pumping; and Section 33 38 00 SP, Sewer CCTV Inspection).
- d. Pre-construction and post-construction televising in accordance with Ogden City Standard Chapter 3, Section 2.1 and as specified below. (Refer to Section 33 38 00 SP, Existing Sewer CCTV Inspection).
 - i. CCTV personnel are to be certified under National Association of Sewer Service Companies (NASSCO) Pipeline Assessment Certification Program (PACP).
 - ii. Ogden City Reserves the right to have any portion of the pipe televised again at the contractor's expense, based on inaccurate or unclear information.

END OF DOCUMENT



PLAN



PROFILE

SCALE
 20
 40
 VERT: 1" = 4' : 22X34
 1" = 8' : 11X17

CONSTRUCTION NOTES

- 1 8" PVC (SDR 35) SEWER PIPE
- 2 10" PVC (SDR 35) SEWER PIPE
- 3 21" PVC (SDR 35) SEWER PIPE
- 4 36" PVC (SDR 35) SEWER PIPE
- 5 CONNECT TO EXISTING MANHOLE
- 6 60" SEWER MANHOLE PRECAST
- 7 60" SEWER DROP MANHOLE PRECAST
- 8 72" SEWER MANHOLE PRECAST
- 9 84" SEWER MANHOLE PRECAST
- 10 60" SEWER MANHOLE POUR IN PLACE BASE
- 11 72" SEWER MANHOLE POUR IN PLACE BASE
- 12 REMOVE & DISPOSE EXISTING SEWER PIPE
- 13 REMOVE AND DISPOSE OF EXISTING MANHOLE
- 14 ABANDON EX SANITARY SEWER
- 15 ABANDON EX MANHOLE
- 16 4" PVC SEWER LATERAL
- 17 6" PVC SEWER LATERAL
- 18 4" CLEANOUT
- 19 6" CLEANOUT
- 20 REMOVE AND REPLACE WITH 6" ASPHALT
- 21 R&R SURVEY MONUMENT
- 22 RAISE AND COLLAR SURVEY MONUMENT
- 23 R&R CURB & GUTTER
- 24 R&R SIDE WALK
- 25 R&R FENCE
- 26 R&R UDOT PANELS
- 27 R&R UDOT CURB AND GUTTER
- 28 1" MILL AND OVERLAY
- 29 RAISE AND COLLAR EX WATER VALVE
- 30 RAISE AND COLLAR EX MANHOLE
- 31 REMOVE EX WATER VALVE

NOTE:
 1. MAINTAIN ACCESS FOR REFUSE, DELIVERY SERVICES, AND FIRST RESPONDERS FOR ALL PROPERTIES AT ALL TIMES OF CONSTRUCTION.

1	ADDENDUM NO 1	02-10-26
REV NO.	COMMENT	DATE

PROFESSIONAL ENGINEER
 02.10.26
 No. 11099227
 HUI
 XIA
 STATE OF UTAH

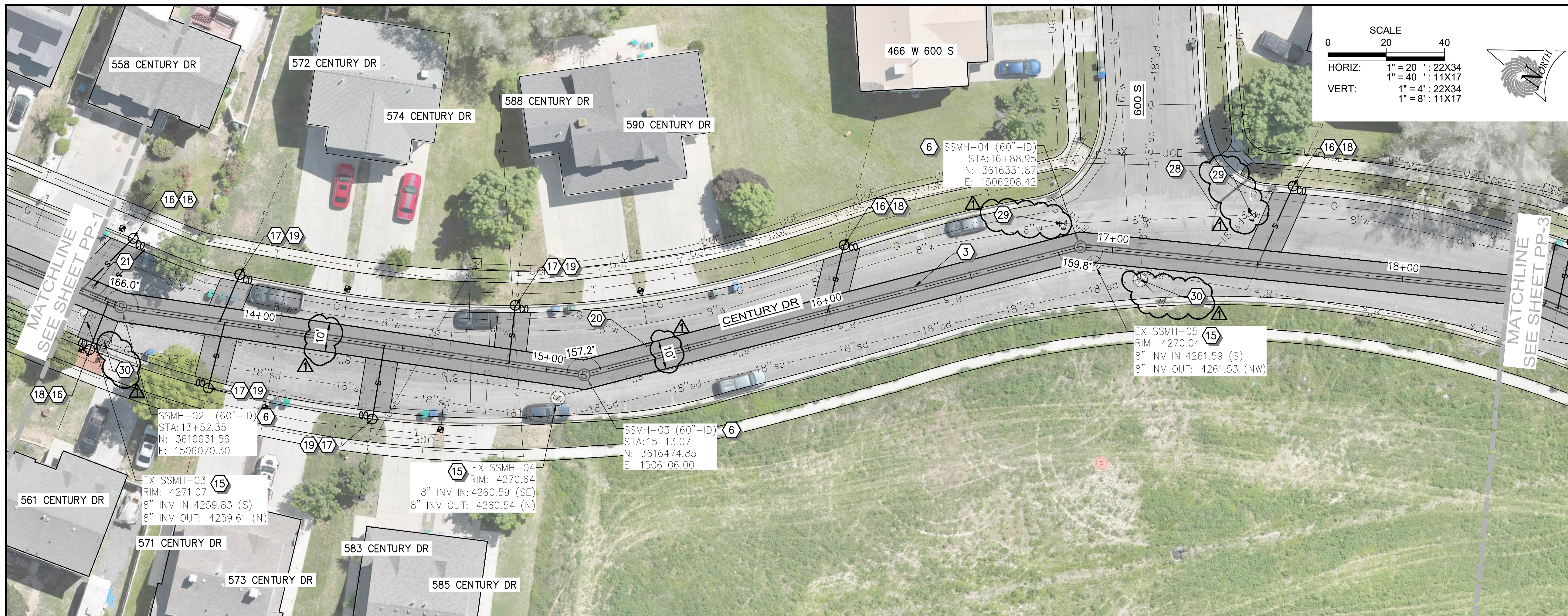
SUNRISE ENGINEERING
 6875 SOUTH 900 EAST
 SALT LAKE CITY, UTAH 84047
 TEL 801.523.0100 · FAX 801.523.0990
 www.sunrise-eng.com

OGDEN CITY

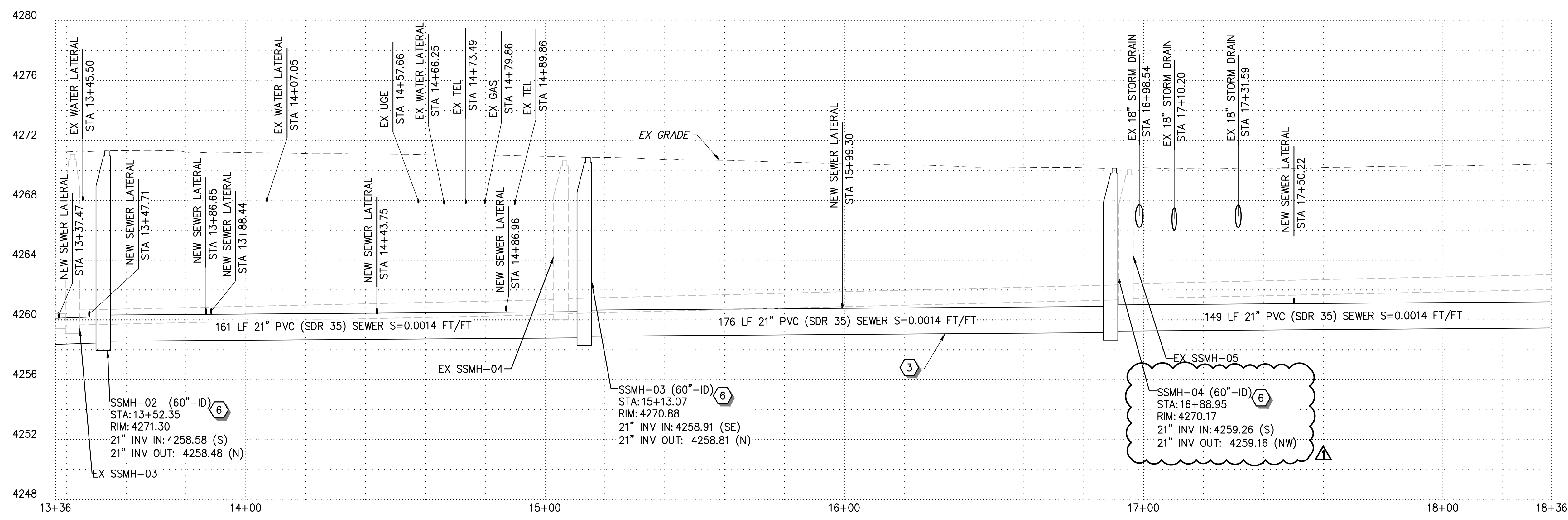
**12TH ST/CENTURY DR TRUNK LINE CAPACITY
 PLAN AND PROFILE - I
 STA 9+54 TO 13+54**

SEI NO. 15684	DESIGNED AX	DRAWN MB	CHECKED CL	SHEET NO. 6 of 18	PP1
------------------	----------------	-------------	---------------	----------------------	------------

ISSUED FOR BID
 P:\Ogden City\15684\12th St Sewer\08 Dwg\Sheets\Phase 1\12th St PP.dwg Feb 10, 2026 10:03am mitchell.bramble



PLAN



PROFILE

CONSTRUCTION NOTES

- 1 8" PVC (SDR 35) SEWER PIPE
- 2 10" PVC (SDR 35) SEWER PIPE
- 3 21" PVC (SDR 35) SEWER PIPE
- 4 36" PVC (SDR 35) SEWER PIPE
- 5 CONNECT TO EXISTING MANHOLE
- 6 60" SEWER MANHOLE PRECAST
- 7 60" SEWER DROP MANHOLE PRECAST
- 8 72" SEWER MANHOLE PRECAST
- 9 84" SEWER MANHOLE PRECAST
- 10 60" SEWER MANHOLE POUR IN PLACE BASE
- 11 72" SEWER MANHOLE POUR IN PLACE BASE
- 12 REMOVE & DISPOSE EXISTING SEWER PIPE
- 13 REMOVE AND DISPOSE OF EXISTING MANHOLE
- 14 ABANDON EX SANITARY SEWER
- 15 ABANDON EX MANHOLE
- 16 4" PVC SEWER LATERAL
- 17 6" PVC SEWER LATERAL
- 18 4" CLEANOUT
- 19 6" CLEANOUT
- 20 REMOVE AND REPLACE WITH 6" ASPHALT
- 21 R&R SURVEY MONUMENT
- 22 RAISE AND COLLAR SURVEY MONUMENT
- 23 R&R CURB & GUTTER
- 24 R&R SIDE WALK
- 25 R&R FENCE
- 26 R&R UDOT PANELS
- 27 R&R UDOT CURB AND CUTTER
- 28 1" MILL AND OVERLAY
- 29 RAISE AND COLLAR EX WATER VALVE
- 30 RAISE AND COLLAR EX MANHOLE
- 31 REMOVE EX WATER VALVE

NOTE:
1. MAINTAIN ACCESS FOR REFUSE, DELIVERY SERVICES, AND FIRST RESPONDERS FOR ALL PROPERTIES AT ALL TIMES OF CONSTRUCTION.

REV NO.	COMMENT	DATE
1	ADDENDUM NO 1	02-10-26

PROFESSIONAL ENGINEER
02.10.26
No. 11099227
HUI
XIA
STATE OF UTAH

SUNRISE ENGINEERING

6875 SOUTH 900 EAST
SALT LAKE CITY, UTAH 84047
TEL 801.523.0100 · FAX 801.523.0990
www.sunrise-eng.com

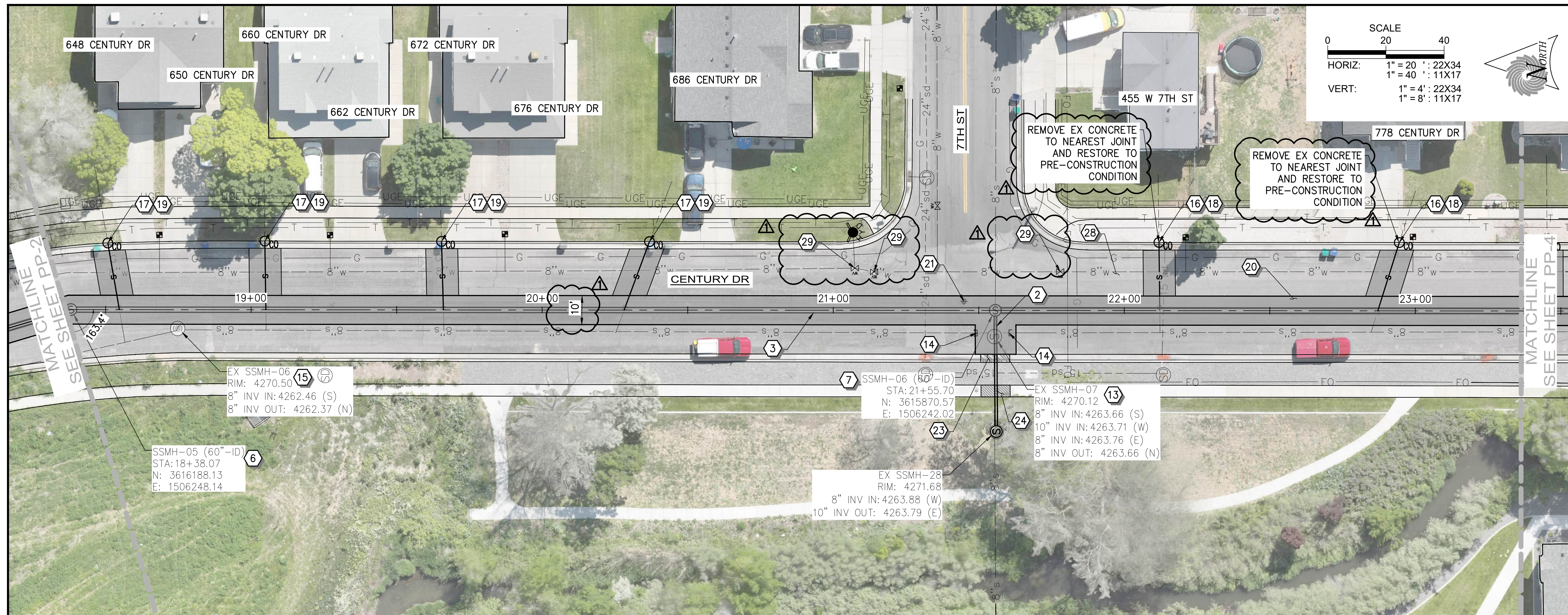
OGDEN CITY

**12TH ST/CENTURY DR TRUNK LINE CAPACITY
PLAN AND PROFILE - II
STA 13+54 TO STA 18+54**

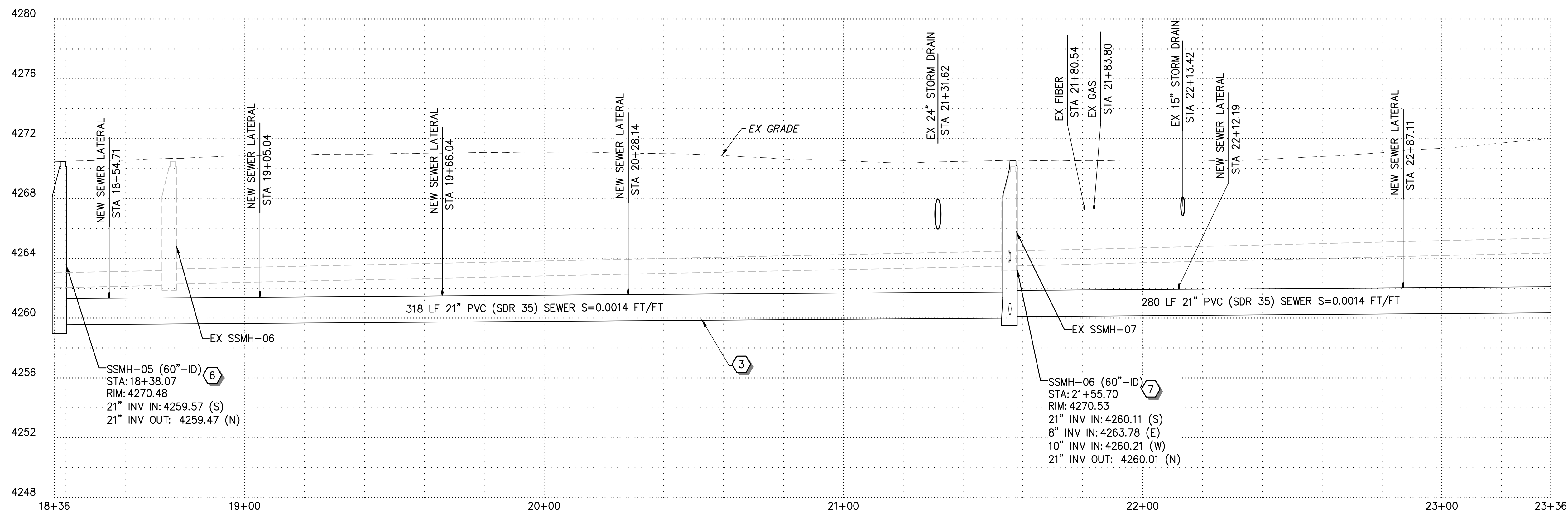
SEI NO. 15684	DESIGNED AX	DRAWN MB	CHECKED CL	SHEET NO. 7 of 18	PP2
------------------	----------------	-------------	---------------	----------------------	-----

ISSUED FOR BID

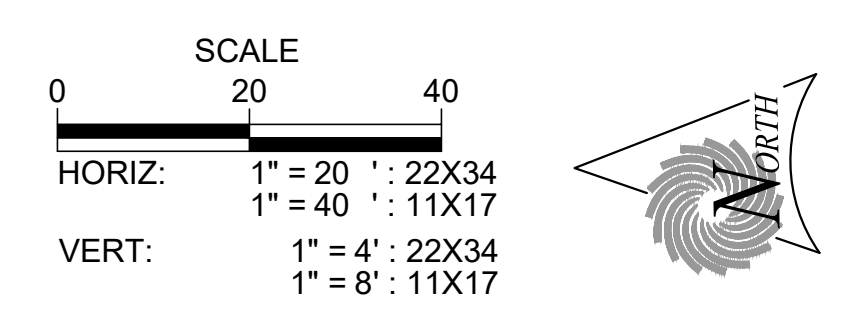
P:\Ogden City\15684-12th St Sewer\08 Dwg\Sheets\Phase 1\12th St PP.dwg Feb 10, 2026 10:04am mitchell.bramble



PLAN



PROFILE



CONSTRUCTION NOTES

- 1 8" PVC (SDR 35) SEWER PIPE
- 2 10" PVC (SDR 35) SEWER PIPE
- 3 21" PVC (SDR 35) SEWER PIPE
- 4 36" PVC (SDR 35) SEWER PIPE
- 5 CONNECT TO EXISTING MANHOLE
- 6 60" SEWER MANHOLE PRECAST
- 7 60" SEWER DROP MANHOLE PRECAST
- 8 72" SEWER MANHOLE PRECAST
- 9 84" SEWER MANHOLE PRECAST
- 10 60" SEWER MANHOLE POUR IN PLACE BASE
- 11 72" SEWER MANHOLE POUR IN PLACE BASE
- 12 REMOVE & DISPOSE EXISTING SEWER PIPE
- 13 REMOVE AND DISPOSE OF EXISTING MANHOLE
- 14 ABANDON EX SANITARY SEWER
- 15 ABANDON EX MANHOLE
- 16 4" PVC SEWER LATERAL
- 17 6" PVC SEWER LATERAL
- 18 4" CLEANOUT
- 19 6" CLEANOUT
- 20 REMOVE AND REPLACE WITH 6" ASPHALT
- 21 R&R SURVEY MONUMENT
- 22 RAISE AND COLLAR SURVEY MONUMENT
- 23 R&R CURB & GUTTER
- 24 R&R SIDE WALK
- 25 R&R FENCE
- 26 R&R UDOT PANELS
- 27 R&R UDOT CURB AND CUTTER
- 28 1" MILL AND OVERLAY
- 29 RAISE AND COLLAR EX WATER VALVE
- 30 RAISE AND COLLAR EX MANHOLE
- 31 REMOVE EX WATER VALVE

NOTE:
1. MAINTAIN ACCESS FOR REFUSE, DELIVERY SERVICES, AND FIRST RESPONDERS FOR ALL PROPERTIES AT ALL TIMES OF CONSTRUCTION.

REV NO.	COMMENT	DATE
1	ADDENDUM NO 1	02-10-26

PROFESSIONAL ENGINEER
02.10.26
No. 11099227
HUI
XIA
STATE OF UTAH

SUNRISE ENGINEERING

6875 SOUTH 900 EAST
SALT LAKE CITY, UTAH 84047
TEL 801.523.0100 · FAX 801.523.0990
www.sunrise-eng.com

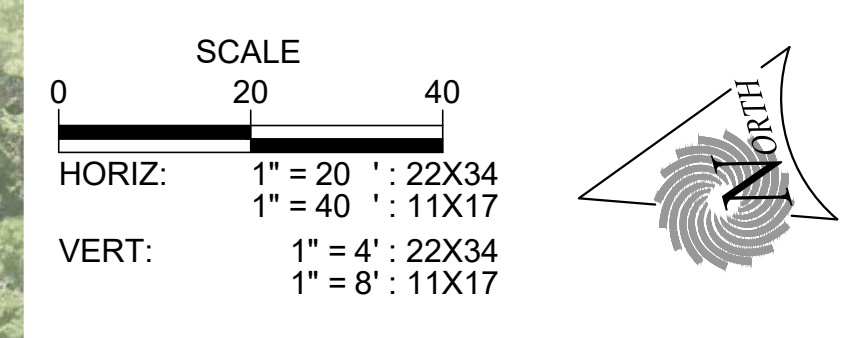
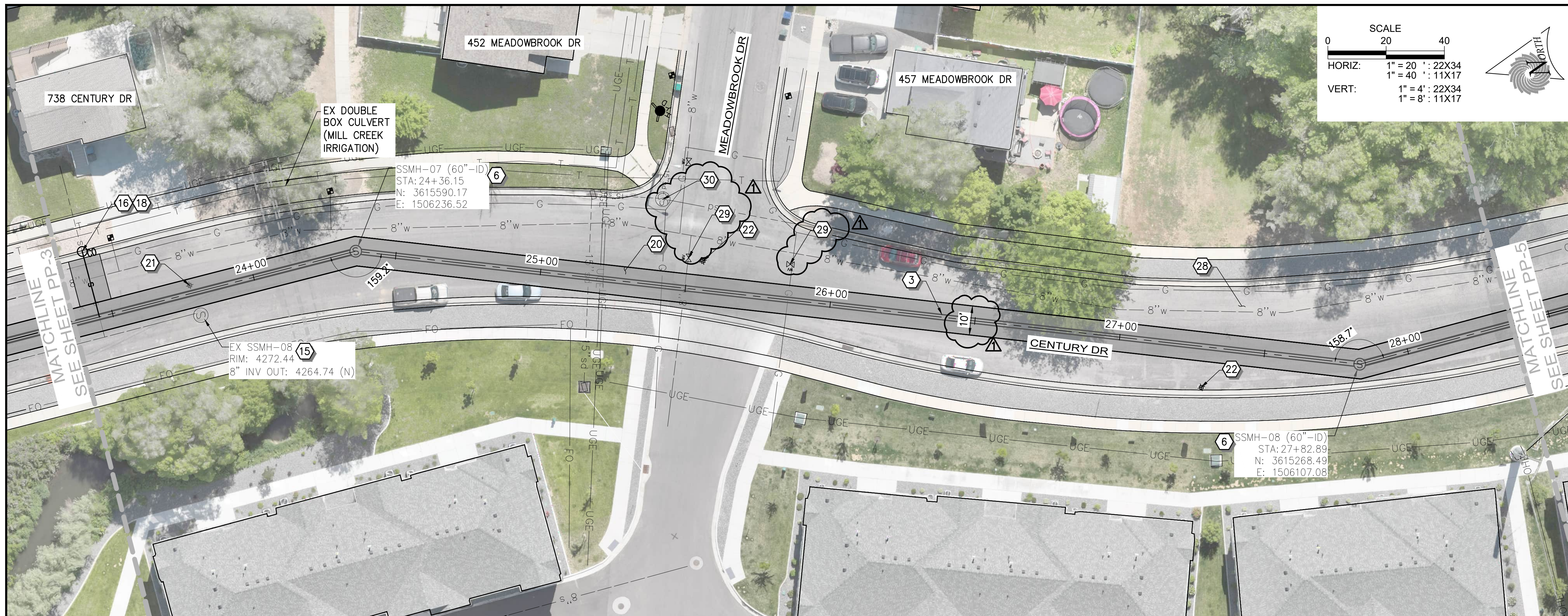
OGDEN CITY
12TH ST/CENTURY DR TRUNK LINE CAPACITY
PLAN AND PROFILE - III
STA 18+54 TO STA 23+54

SEI NO.	DESIGNED	DRAWN	CHECKED	SHEET NO.
15684	AX	MB	CL	8 of 18

PP3

ISSUED FOR BID

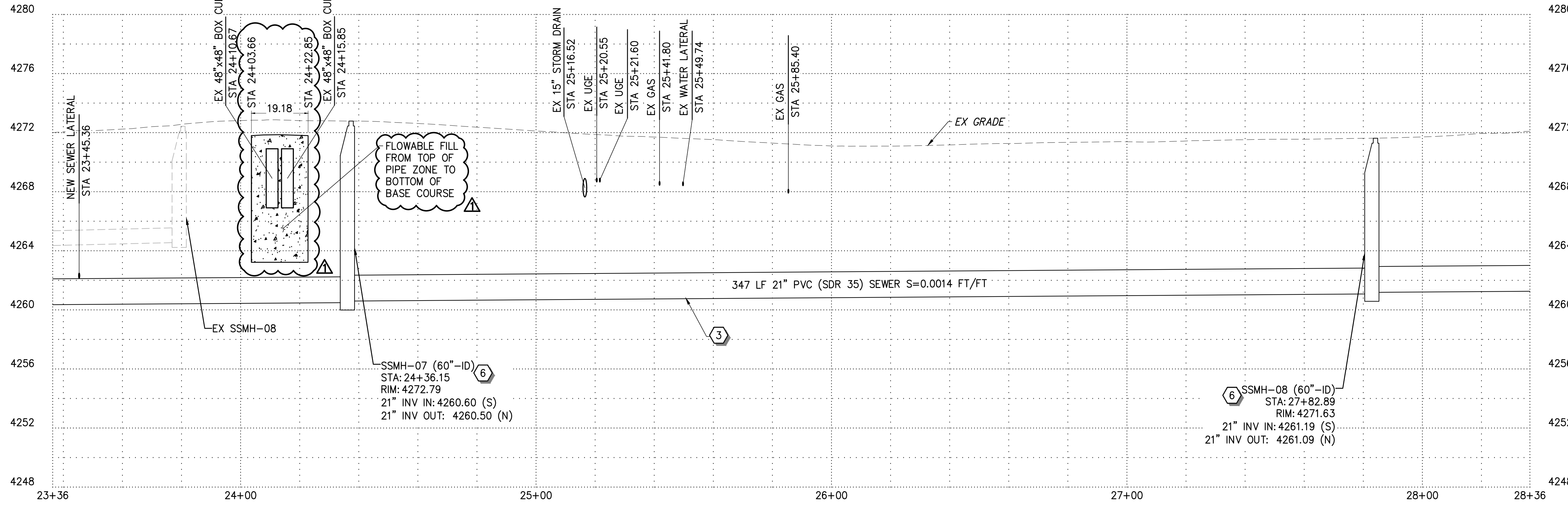
P:\Ogden City\15684-12th St Sewer\08 Dwg\Sheets\Phase 1\12th St Sewer\08 Dwg\Sheet PP-2.dwg Feb 10, 2026 10:04am mitchellborrable



CONSTRUCTION NOTES

- 1 8" PVC (SDR 35) SEWER PIPE
- 2 10" PVC (SDR 35) SEWER PIPE
- 3 21" PVC (SDR 35) SEWER PIPE
- 4 36" PVC (SDR 35) SEWER PIPE
- 5 CONNECT TO EXISTING MANHOLE
- 6 60" SEWER MANHOLE PRECAST
- 7 60" SEWER DROP MANHOLE PRECAST
- 8 72" SEWER MANHOLE PRECAST
- 9 84" SEWER MANHOLE PRECAST
- 10 60" SEWER MANHOLE POUR IN PLACE BASE
- 11 72" SEWER MANHOLE POUR IN PLACE BASE
- 12 REMOVE & DISPOSE EXISTING SEWER PIPE
- 13 REMOVE AND DISPOSE OF EXISTING MANHOLE
- 14 ABANDON EX SANITARY SEWER
- 15 ABANDON EX MANHOLE
- 16 4" PVC SEWER LATERAL
- 17 6" PVC SEWER LATERAL
- 18 4" CLEANOUT
- 19 6" CLEANOUT
- 20 REMOVE AND REPLACE WITH 6" ASPHALT
- 21 R&R SURVEY MONUMENT
- 22 RAISE AND COLLAR SURVEY MONUMENT
- 23 R&R CURB & GUTTER
- 24 R&R SIDE WALK
- 25 R&R FENCE
- 26 R&R UDOT PANELS
- 27 R&R UDOT CURB AND CUTTER
- 28 1" MILL AND OVERLAY
- 29 RAISE AND COLLAR EX WATER VALVE
- 30 RAISE AND COLLAR EX MANHOLE
- 31 REMOVE EX WATER VALVE

PLAN



PROFILE

NOTE:
1. MAINTAIN ACCESS FOR REFUSE, DELIVERY SERVICES, AND FIRST RESPONDERS FOR ALL PROPERTIES AT ALL TIMES OF CONSTRUCTION.

REV NO.	COMMENT	DATE
1	ADDENDUM NO 1	02-10-26

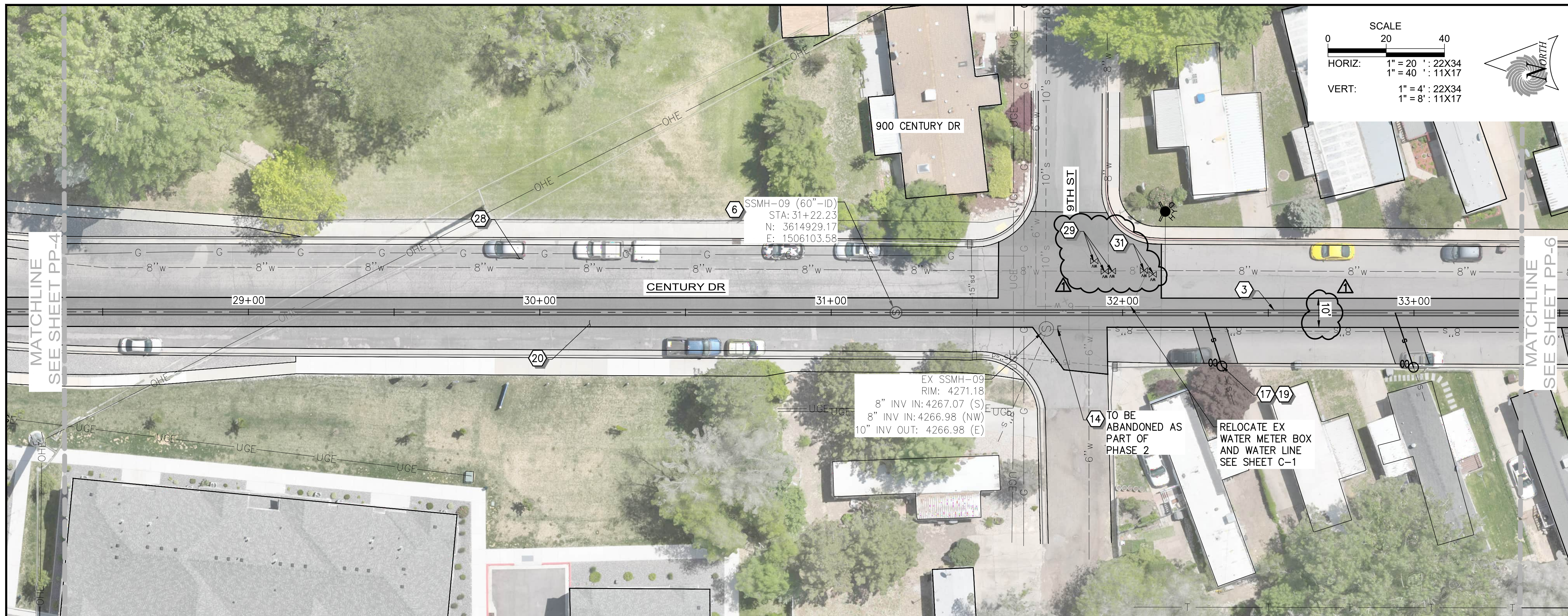
PROFESSIONAL ENGINEER
02.10.26
No. 11099227
HUI
XIA
STATE OF UTAH

SUNRISE ENGINEERING

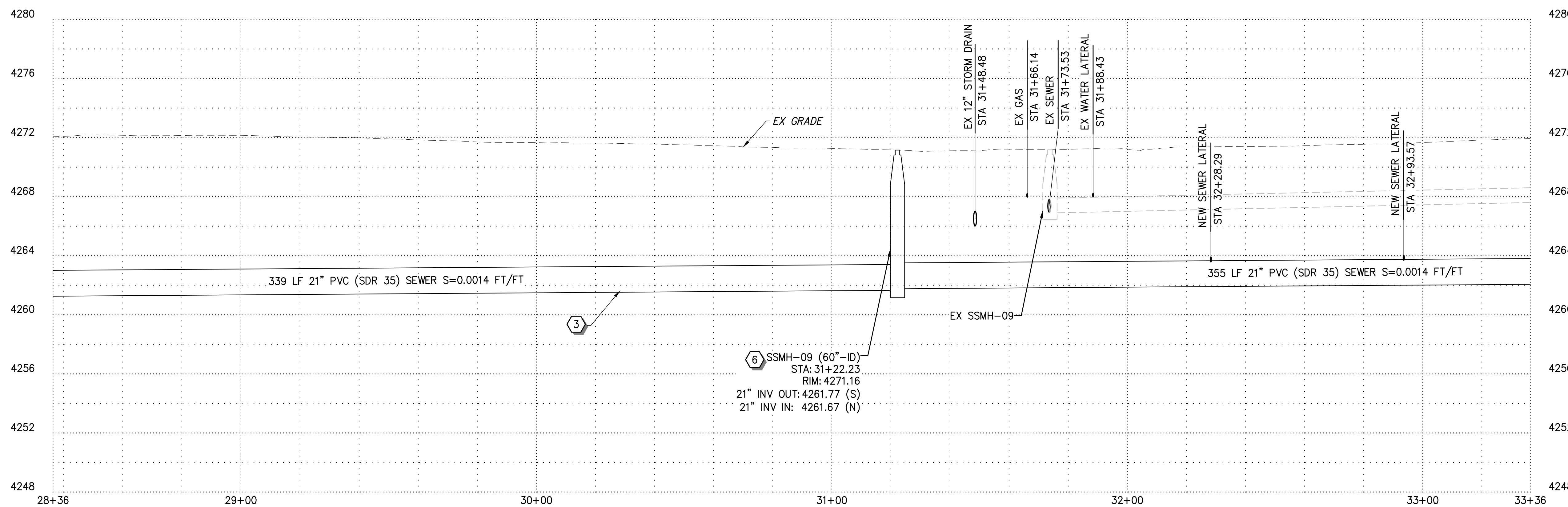
6875 SOUTH 900 EAST
SALT LAKE CITY, UTAH 84047
TEL 801.523.0100 · FAX 801.523.0990
www.sunrise-eng.com

OGDEN CITY				
12TH ST/CENTURY DR TRUNK LINE CAPACITY				
PLAN AND PROFILE - IV				
STA 23+54 TO STA 28+54				
SEI NO. 15684	DESIGNED AX	DRAWN MB	CHECKED CL	SHEET NO. 9 of 18
				PP4

P:\Ogden City\15684 12th St Sewer\08 Dwg\Sheets\Phase 1\12th St PP.dwg Feb 10, 2026 10:04am mitchell.bramble



PLAN



PROFILE

CONSTRUCTION NOTES

- 1 8" PVC (SDR 35) SEWER PIPE
- 2 10" PVC (SDR 35) SEWER PIPE
- 3 21" PVC (SDR 35) SEWER PIPE
- 4 36" PVC (SDR 35) SEWER PIPE
- 5 CONNECT TO EXISTING MANHOLE
- 6 60" SEWER MANHOLE PRECAST
- 7 60" SEWER DROP MANHOLE PRECAST
- 8 72" SEWER MANHOLE PRECAST
- 9 84" SEWER MANHOLE PRECAST
- 10 60" SEWER MANHOLE POUR IN PLACE BASE
- 11 72" SEWER MANHOLE POUR IN PLACE BASE
- 12 REMOVE & DISPOSE EXISTING SEWER PIPE
- 13 REMOVE AND DISPOSE OF EXISTING MANHOLE
- 14 ABANDON EX SANITARY SEWER
- 15 ABANDON EX MANHOLE
- 16 4" PVC SEWER LATERAL
- 17 6" PVC SEWER LATERAL
- 18 4" CLEANOUT
- 19 6" CLEANOUT
- 20 REMOVE AND REPLACE WITH 6" ASPHALT
- 21 R&R SURVEY MONUMENT
- 22 RAISE AND COLLAR SURVEY MONUMENT
- 23 R&R CURB & GUTTER
- 24 R&R SIDE WALK
- 25 R&R FENCE
- 26 R&R UDOT PANELS
- 27 R&R UDOT CURB AND GUTTER
- 28 1" MILL AND OVERLAY
- 29 RAISE AND COLLAR EX WATER VALVE
- 30 RAISE AND COLLAR EX MANHOLE
- 31 REMOVE EX WATER VALVE

NOTE:
1. MAINTAIN ACCESS FOR REFUSE, DELIVERY SERVICES, AND FIRST RESPONDERS FOR ALL PROPERTIES AT ALL TIMES OF CONSTRUCTION.

1	ADDENDUM NO 1	02-10-26
REV NO.	COMMENT	DATE

PROFESSIONAL ENGINEER

02.10.26

No. 11099227

HUI

XIA

STATE OF UTAH

SUNRISE ENGINEERING

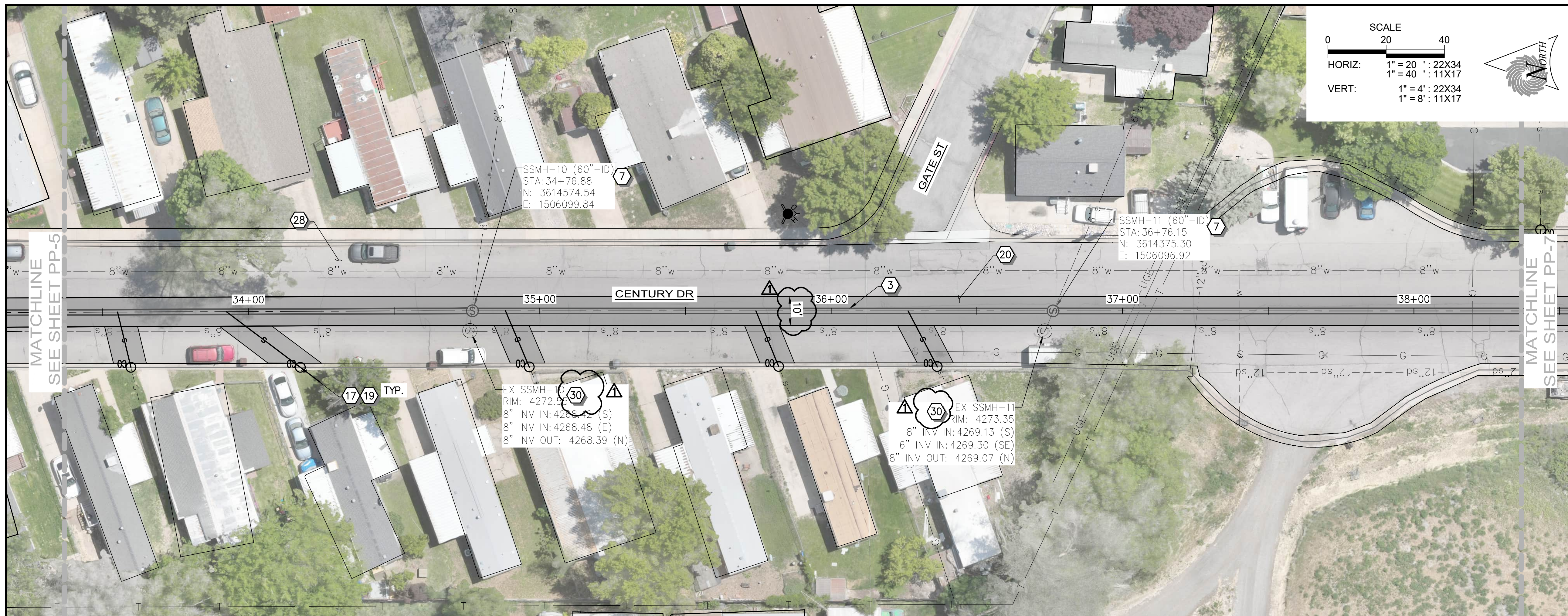
6875 SOUTH 900 EAST
SALT LAKE CITY, UTAH 84047
TEL 801.523.0100 · FAX 801.523.0990
www.sunrise-eng.com

OGDEN CITY
12TH ST/CENTURY DR TRUNK LINE CAPACITY
PLAN AND PROFILE - V
STA 28+54 TO STA 33+54

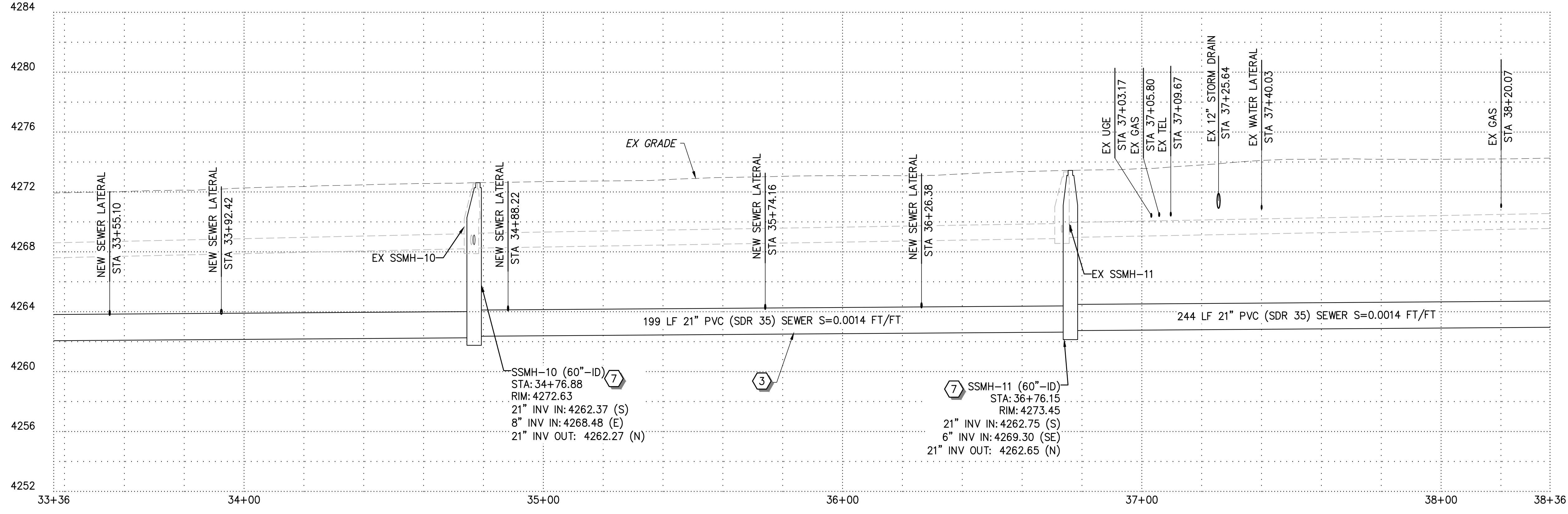
SEI NO. 15684	DESIGNED AX	DRAWN MB	CHECKED CL	SHEET NO. 10 of 18	PP5
------------------	----------------	-------------	---------------	-----------------------	------------

ISSUED FOR BID

P:\Ogden City\15684\12th St Sewer\08 Dwg\Sheets\Phase 1\12thss PP.dwg Feb 10, 2026 10:05am mitchell.bramble



PLAN



PROFILE

SCALE
 0 20 40
 HORIZ: 1" = 20' : 22X34
 1" = 40' : 11X17
 VERT: 1" = 4' : 22X34
 1" = 8' : 11X17

CONSTRUCTION NOTES

- 1 8" PVC (SDR 35) SEWER PIPE
- 2 10" PVC (SDR 35) SEWER PIPE
- 3 21" PVC (SDR 35) SEWER PIPE
- 4 36" PVC (SDR 35) SEWER PIPE
- 5 CONNECT TO EXISTING MANHOLE
- 6 60" SEWER MANHOLE PRECAST
- 7 60" SEWER DROP MANHOLE PRECAST
- 8 72" SEWER MANHOLE PRECAST
- 9 84" SEWER MANHOLE PRECAST
- 10 60" SEWER MANHOLE POUR IN PLACE BASE
- 11 72" SEWER MANHOLE POUR IN PLACE BASE
- 12 REMOVE & DISPOSE EXISTING SEWER PIPE
- 13 REMOVE AND DISPOSE OF EXISTING MANHOLE
- 14 ABANDON EX SANITARY SEWER
- 15 ABANDON EX MANHOLE
- 16 4" PVC SEWER LATERAL
- 17 6" PVC SEWER LATERAL
- 18 4" CLEANOUT
- 19 6" CLEANOUT
- 20 REMOVE AND REPLACE WITH 6" ASPHALT
- 21 R&R SURVEY MONUMENT
- 22 RAISE AND COLLAR SURVEY MONUMENT
- 23 R&R CURB & GUTTER
- 24 R&R SIDE WALK
- 25 R&R FENCE
- 26 R&R UDOT PANELS
- 27 R&R UDOT CURB AND GUTTER
- 28 1" MILL AND OVERLAY
- 29 RAISE AND COLLAR EX WATER VALVE
- 30 RAISE AND COLLAR EX MANHOLE
- 31 REMOVE EX WATER VALVE

NOTE:
 1. MAINTAIN ACCESS FOR REFUSE, DELIVERY SERVICES, AND FIRST RESPONDERS FOR ALL PROPERTIES AT ALL TIMES OF CONSTRUCTION.

REV NO.	COMMENT	DATE
1	ADDENDUM NO 1	02-10-26

PROFESSIONAL ENGINEER
 02.10.26
 No. 1109227
 HUI
 XIA
 STATE OF UTAH

SUNRISE ENGINEERING

6875 SOUTH 900 EAST
 SALT LAKE CITY, UTAH 84047
 TEL 801.523.0100 · FAX 801.523.0990
 www.sunrise-eng.com

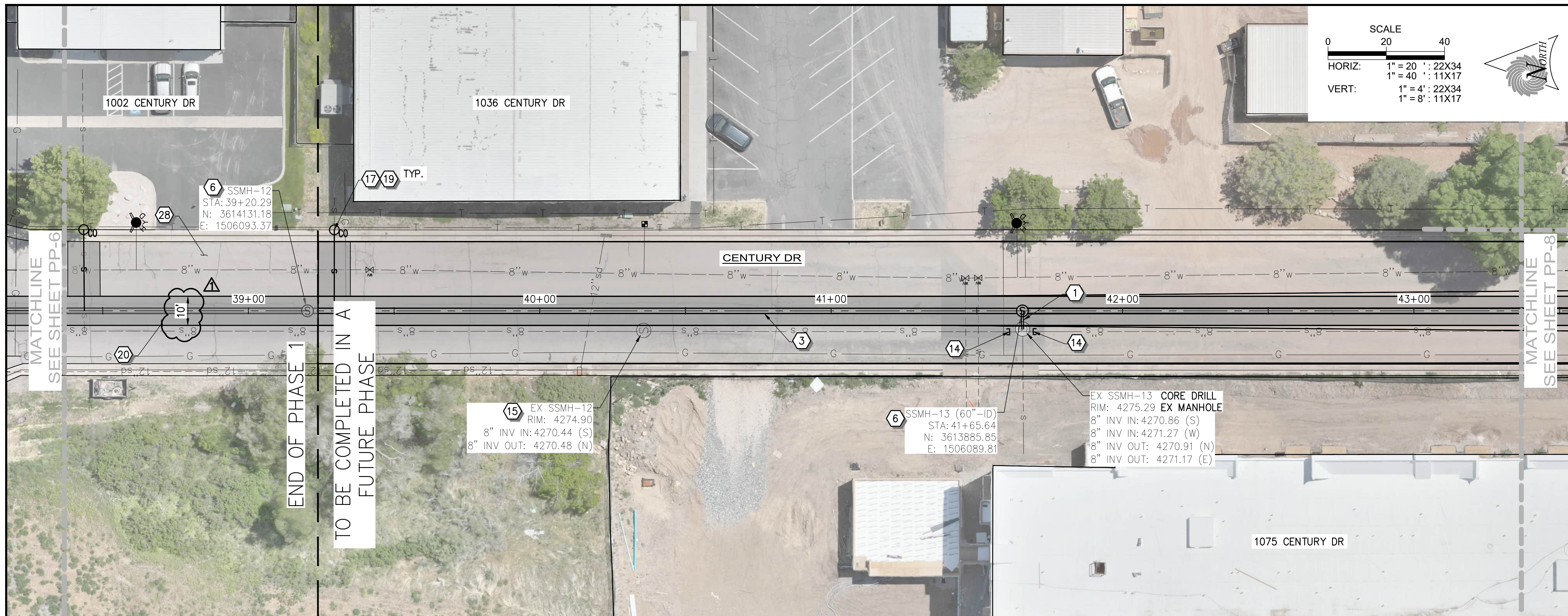
OGDEN CITY

**12TH ST/CENTURY DR TRUNK LINE CAPACITY
 PLAN AND PROFILE - VI
 STA 33+54 TO STA 38+54**

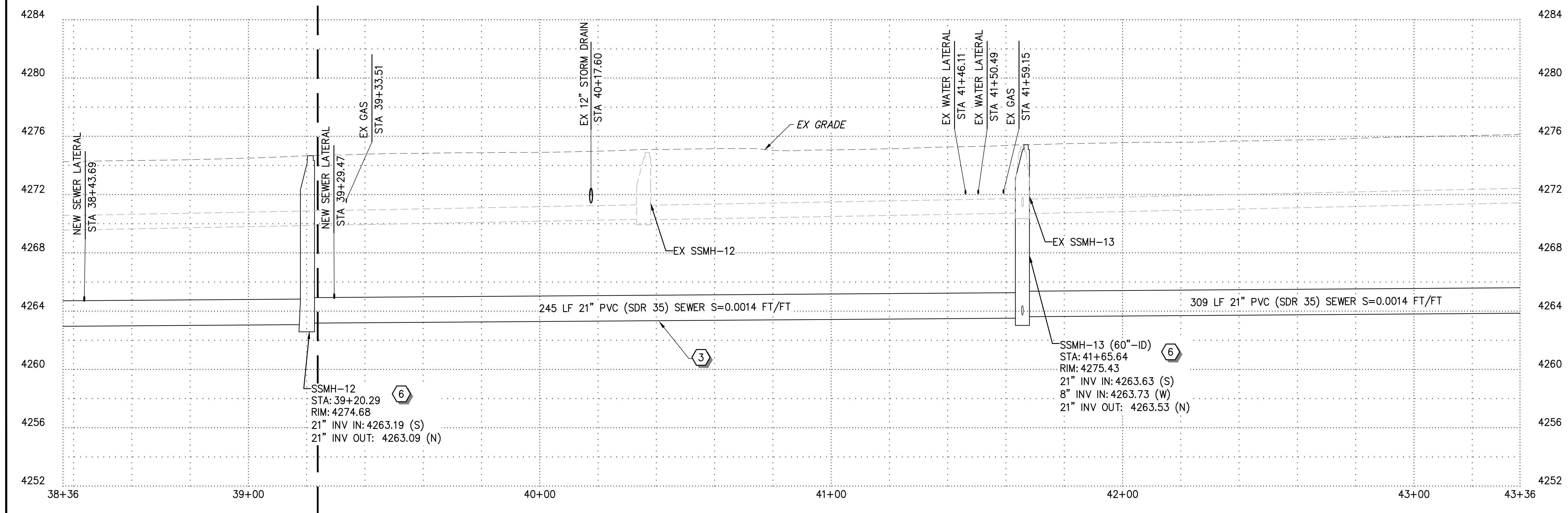
SEI NO. 15684	DESIGNED AX	DRAWN MB	CHECKED CL	SHEET NO. 11 of 18	PP6
------------------	----------------	-------------	---------------	-----------------------	------------

ISSUED FOR BID

P:\Ogden_City\15684\12th St Sewer\08 Dwg\Sheets\Phase 1\12th St PP-6.dwg Feb 10, 2026 10:05am mitchell.bramble



PLAN



PROFILE

SCALE
 0 20 40
 HORIZ: 1" = 20' : 22X34
 1" = 40' : 11X17
 VERT: 1" = 4' : 22X34
 1" = 8' : 11X17

CONSTRUCTION NOTES

- 1 8" PVC (SDR 35) SEWER PIPE
- 2 10" PVC (SDR 35) SEWER PIPE
- 3 21" PVC (SDR 35) SEWER PIPE
- 4 36" PVC (SDR 35) SEWER PIPE
- 5 CONNECT TO EXISTING MANHOLE
- 6 60" SEWER MANHOLE PRECAST
- 7 60" SEWER DROP MANHOLE PRECAST
- 8 72" SEWER MANHOLE PRECAST
- 9 84" SEWER MANHOLE PRECAST
- 10 60" SEWER MANHOLE POUR IN PLACE BASE
- 11 72" SEWER MANHOLE POUR IN PLACE BASE
- 12 REMOVE & DISPOSE EXISTING SEWER PIPE
- 13 REMOVE AND DISPOSE OF EXISTING MANHOLE
- 14 ABANDON EX SANITARY SEWER
- 15 ABANDON EX MANHOLE
- 16 4" PVC SEWER LATERAL
- 17 6" PVC SEWER LATERAL
- 18 4" CLEANOUT
- 19 6" CLEANOUT
- 20 REMOVE AND REPLACE WITH 6" ASPHALT
- 21 R&R SURVEY MONUMENT
- 22 RAISE AND COLLAR SURVEY MONUMENT
- 23 R&R CURB & GUTTER
- 24 R&R SIDE WALK
- 25 R&R FENCE
- 26 R&R UDOT PANELS
- 27 R&R UDOT CURB AND GUTTER
- 28 1" MILL AND OVERLAY
- 29 RAISE AND COLLAR EX WATER VALVE
- 30 RAISE AND COLLAR EX MANHOLE
- 31 REMOVE EX WATER VALVE

NOTE:
 1. MAINTAIN ACCESS FOR REFUSE, DELIVERY SERVICES, AND FIRST RESPONDERS FOR ALL PROPERTIES AT ALL TIMES OF CONSTRUCTION.

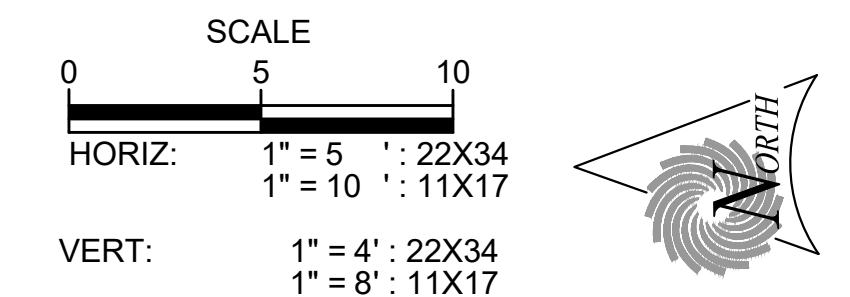
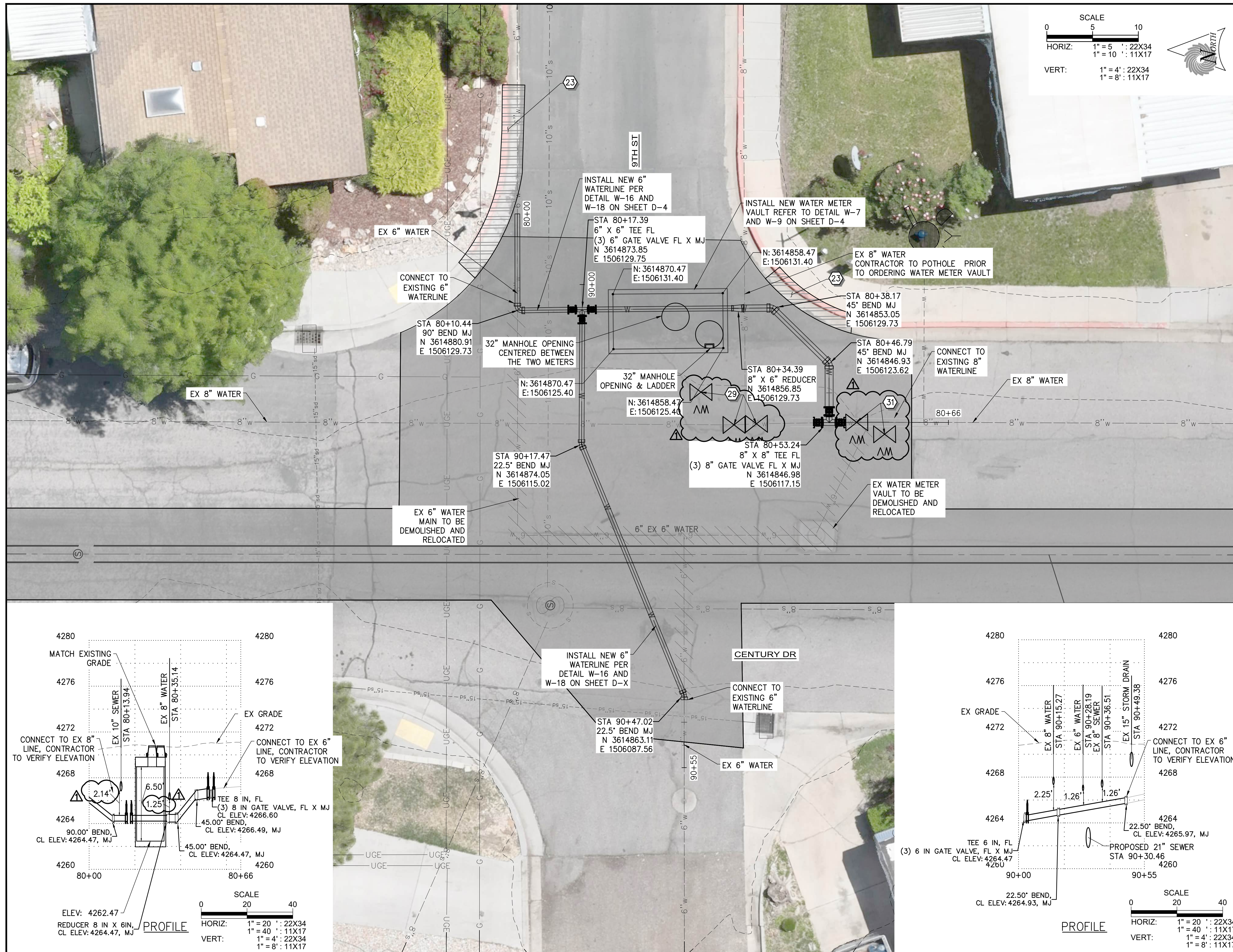
1	ADDENDUM NO 1	02-10-26
REV NO.	COMMENT	DATE

SUNRISE ENGINEERING
 6875 SOUTH 900 EAST
 SALT LAKE CITY, UTAH 84047
 TEL 801.523.0100 · FAX 801.523.0990
 www.sunrise-eng.com

OGDEN CITY
 12TH ST/CENTURY DR TRUNK LINE CAPACITY
 PLAN AND PROFILE - VII
 STA 38+54 TO STA 43+54

SEI NO. 15684	DESIGNED AX	DRAWN MB	CHECKED CL	SHEET NO. 12 of 18	PP7
------------------	----------------	-------------	---------------	-----------------------	-----

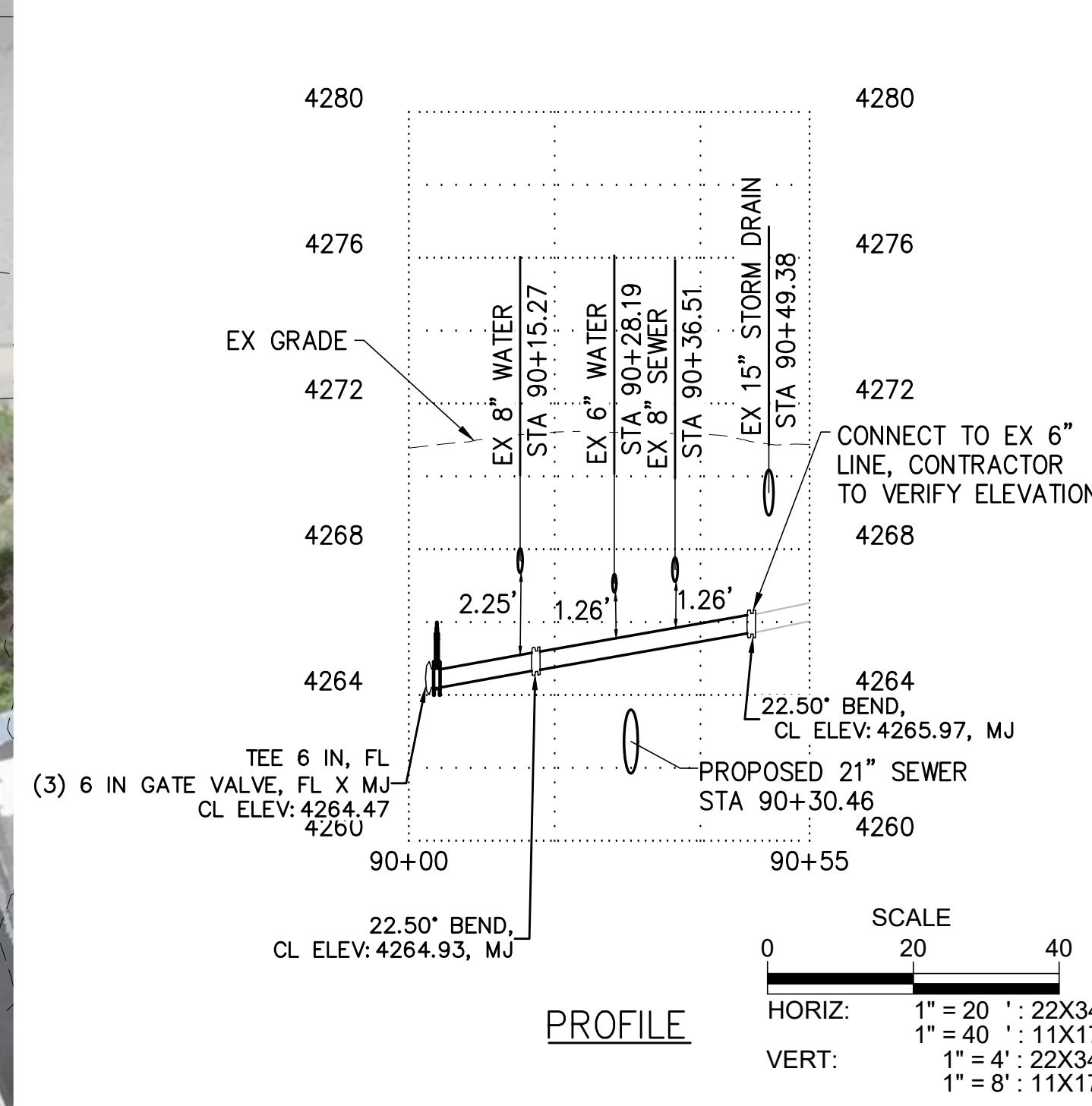
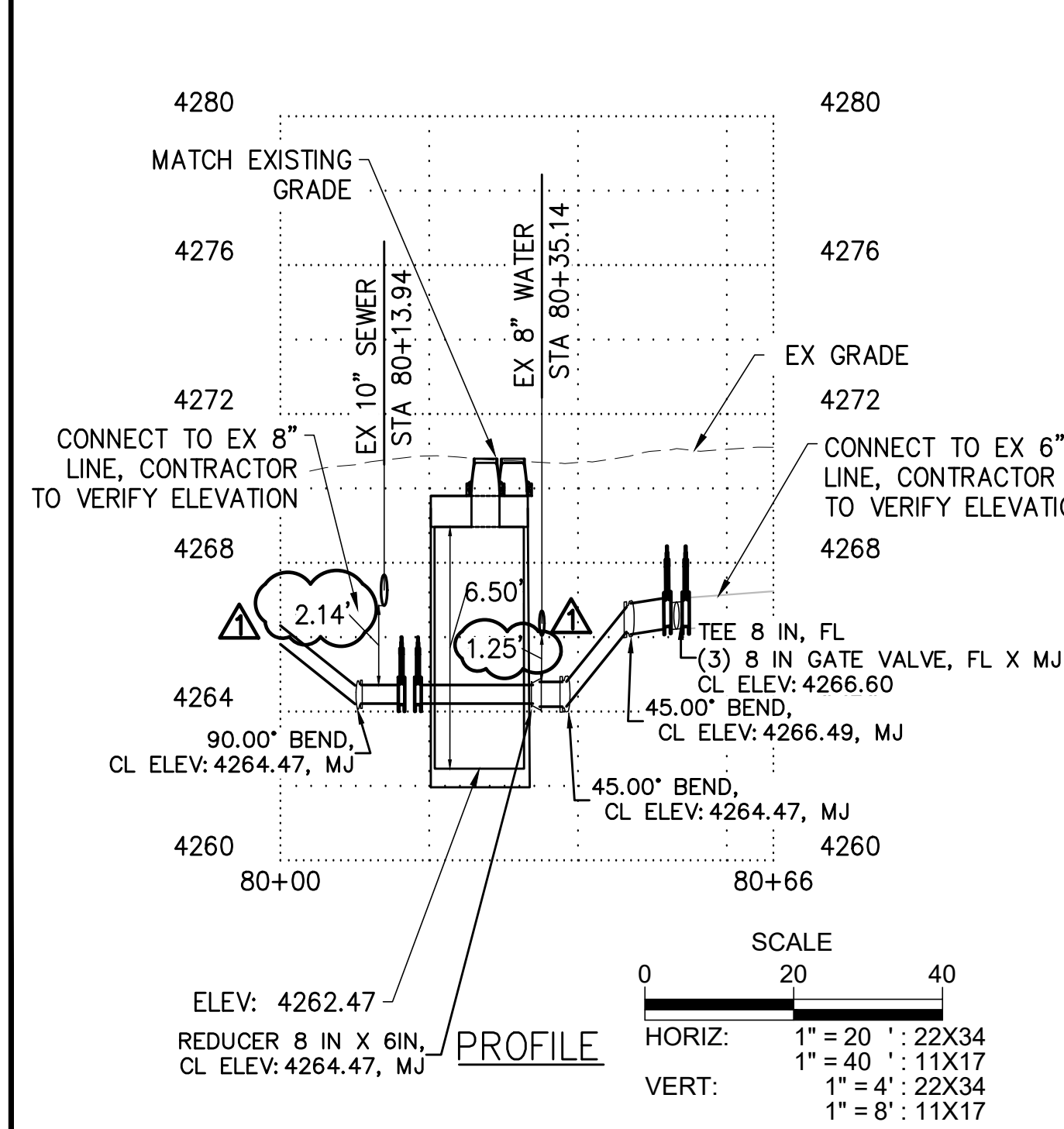
ISSUED FOR BID
 P:\Ogden City\15684\12th St Sewer\08 Dwg\Sheets\Phase 1\12th St PP.dwg Feb 10, 2026 10:05am mitchell@bramble



CONSTRUCTION NOTES

- ① 8" PVC (SDR 35) SEWER PIPE (SS-1) (D-3) (D-3)
- ② 10" PVC (SDR 35) SEWER PIPE (SS-3) (D-3) (D-3)
- ③ 21" PVC (SDR 35) SEWER PIPE (SS-3) (D-3) (D-3)
- ④ 36" PVC (SDR 35) SEWER PIPE (D-3) (D-3) (D-3)
- ⑤ CONNECT TO EXISTING MANHOLE (D-3) (A) (A)
- ⑥ 60" SEWER MANHOLE PRECAST (SS-1) (SS-4) (SS-5) (D-2) (D-3) (D-3)
- ⑦ 60" SEWER DROP MANHOLE PRECAST (A) (SS-4) (SS-5) (D-4) (D-3) (D-3)
- ⑧ 72" SEWER MANHOLE PRECAST (SS-1) (SS-5) (SS-6) (D-2) (D-3) (D-3)
- ⑨ 84" SEWER MANHOLE PRECAST (SS-1) (SS-5) (SS-6) (D-2) (D-3) (D-3)
- ⑩ 60" SEWER MANHOLE POUR IN PLACE BASE (D-3) (D-3) (D-3)
- ⑪ 72" SEWER MANHOLE POUR IN PLACE BASE (B) (SS-5) (SS-6) (D-3) (D-3) (D-3)
- ⑫ REMOVE & DISPOSE EXISTING SEWER PIPE
- ⑬ REMOVE AND DISPOSE OF EXISTING MANHOLE
- ⑭ ABANDON EX SANITARY SEWER
- ⑮ ABANDON EX MANHOLE (SS-2) (D-2) (D-2)
- ⑯ 4" PVC SEWER LATERAL (SS-2) (D-2) (D-2)
- ⑰ 6" PVC SEWER LATERAL (SS-2) (D-2) (D-2)
- ⑱ 4" CLEANOUT (SS-8) (D-3) (D-3)
- ⑲ 6" CLEANOUT (SS-8) (D-3) (D-3)
- ⑳ REMOVE AND REPLACE WITH 6" ASPHALT (RD-3) (D-1) (D-1)
- ㉑ R&R SURVEY MONUMENT (SUR-1) (D-2) (D-2) (SUR-2) (D-2) (D-2) (SUR-3) (D-2) (D-2)
- ㉒ RAISE AND COLLAR SURVEY MONUMENT (SUR-1) (D-2) (D-2) (SUR-2) (D-2) (D-2) (SUR-3) (D-2) (D-2)
- ㉓ R&R CURB & GUTTER (RD-4) (D-1) (D-1)
- ㉔ R&R SIDE WALK (RD-5) (D-1) (D-1)
- ㉕ R&R FENCE (RD-5) (D-1) (D-1)
- ㉖ R&R UDOT PANELS (PV-2) (D-5) (D-6) (PV-3) (D-6) (D-7) (PV-5) (D-7) (D-7)
- ㉗ R&R UDOT CURB AND GUTTER (SW-2A) (D-8) (D-8)
- ㉘ 1" MILL AND OVERLAY
- ㉙ RAISE AND COLLAR EX WATER VALVE
- ㉚ RAISE AND COLLAR EX MANHOLE
- ㉛ REMOVE EX WATER VALVE

NOTE:
1. MAINTAIN ACCESS FOR REFUSE, DELIVERY SERVICES, AND FIRST RESPONDERS FOR ALL PROPERTIES AT ALL TIMES OF CONSTRUCTION.



ISSUED FOR BID

	ADDENDUM NO 1	02-10-26
REV NO.	COMMENT	DATE
1	ADDENDUM NO 1	02-10-26

PROFESSIONAL ENGINEER
No. 11099227
HUI XIA
STATE OF UTAH

SUNRISE ENGINEERING

6875 SOUTH 900 EAST
SALT LAKE CITY, UTAH 84047
TEL 801.523.0100 · FAX 801.523.0990
www.sunrise-eng.com

OGDEN CITY

**12TH ST/CENTURY DR TRUNK LINE CAPACITY
UTILITY RELOCATION PLAN**

DESIGNED AX	DRAWN MB	CHECKED CL	SHEET NO. 19 OF 29	C-1
----------------	-------------	---------------	-----------------------	------------